

# **POWER**

# **EQUIPMENTEER**



A publication for and about Power Equipment Company's customers • [www.PowerEquipmenteer.com](http://www.PowerEquipmenteer.com) • 2015 No. 1

## **A.S. FORNEA CONSTRUCTION**

Three divisions allow Oxford, Miss., company to complete turnkey site and building projects



Andy Fornea,  
Owner

# **KOMATSU**<sup>®</sup>

# A MESSAGE FROM THE PRESIDENT



Chris Gaylor

**Komatsu  
machines  
offer greater  
efficiency  
and lower  
operating costs**

**POWER**  
EQUIPMENT

3300 ALCOA HIGHWAY • KNOXVILLE, TENNESSEE 37920-5558  
(865) 577-5563 • FAX (865) 579-7370

Dear Valued Customer:

It's been said before, but it bears repeating: Komatsu is the leader in innovative equipment designed to increase efficiency and lower your operating costs. In this issue of your Power Equipmenteer magazine, the spotlight turns to Komatsu's latest offering, the PC210LCi-10, the world's first *intelligent* Machine Control excavator.

In 2013, Komatsu introduced its first *intelligent* Machine Control dozer and subsequently added more models to the lineup. Now, the PC210LCi-10 joins the family. The excavator semi-automatically limits overexcavation and traces the target surface for greater accuracy and reduced material costs.

Moving material as efficiently, productively and cost-effectively as possible is every company's goal. Komatsu wants to further reduce your owning and operating costs, so it includes complimentary scheduled maintenance for the first three years or 2,000 hours on Tier 4 machines under the Komatsu CARE program.

All equipment in the *intelligent* Machine Control family is covered under the program, as is the new Tier 4 Final HM300-5 articulated truck, which is also featured in this issue. It pairs well with 30- to 60-ton excavators or 5- to 7.5-yard wheel loaders for maximum productivity in mass excavation, even in less-than-ideal conditions.

We hope with the busy construction season just around the corner that you will consider these or other machines from Power Equipment. We have an extensive lineup of equipment to meet your needs, including moving dirt, mining, forestry, scrap or material handling, lifting or a whole host of other applications.

If there's anything we can do for you, whether it's equipment sales or rentals, parts or service, please call or stop by one of our branch locations.

Sincerely,  
POWER EQUIPMENT COMPANY

Chris Gaylor  
President



# POWER EQUIPMENTEER

www.PowerEquipmenteer.com



## THE PRODUCTS PLUS THE PEOPLE TO SERVE YOU!

### CORPORATE OFFICE

**Chris Gaylor**, President  
Ph: (865) 579-7301  
**Andy Moon**, Vice President, Sales  
Ph: (865) 579-7307  
**Shawn Robins**, Vice President, Product Support  
Ph: (865) 579-7351  
**Jim McNeillie**, Vice President/Finance Manager  
Ph: (865) 579-7310  
**Steve Woodby**, Corporate Rental Sales Manager  
Ph: (865) 755-4886  
**Dennis Dorris**, Used Equipment Manager  
Ph: (615) 287-2552  
**Rick DeSpain**, Product Support Marketing Manager  
Ph: (865) 228-8496  
**Grace Smith**, Equipment Sales Administrator  
Ph: (865) 579-7305  
**Becky Frye**, Executive Secretary  
Ph: (865) 579-7304  
**Wade Archer**, Corporate Trainer  
Ph: (606) 344-6776

## IN THIS ISSUE

### A.S. FORNEA CONSTRUCTION

See how three divisions allow this Oxford, Miss., company to complete turnkey site and building projects.

### GUEST OPINION

Discover why industry leaders are calling on Congress to pass and find a way to pay for a long-term transportation plan.

### INDUSTRY OUTLOOK

Find out why the outlook for construction spending is sunny and how it's led by a significant rise in single-family starts.

### INDUSTRY NEWS

An Association of General Contractors analysis shows unemployment has fallen to its lowest level in eight years. See what factors are involved.

### INDUSTRY EVENT

Read about the world's first *intelligent* Machine Control excavator, which was the star, but not the only attraction, at Komatsu's Demo Days.

### INNOVATIVE PRODUCT

See how Komatsu's PC210LCi-10, the world's first *intelligent* Machine Control excavator, minimizes overexcavation.

### A CLOSER LOOK

Learn how Komatsu's new Tier 4 Final PC290LC-11 excavator reduces emissions and lowers fuel consumption.

### NEW PRODUCT

Take a look at Komatsu's HM300-5 articulated truck, which boosts productivity in a variety of applications.

### NASHVILLE

**Mike Luster**, Regional Sales Mgr.  
(615) 351-5905  
**Ross Brown**,  
Assistant Sales and Rental Coord.  
(615) 419-1393  
**Joe Tant**, Equip. Sales  
(931) 626-8276  
**Jeff Walker**, Equip. Sales  
(615) 406-4710  
**Matthew Spence**, Equip. Sales  
(931) 449-9061  
**Marty Dawson**, Parts Mgr.  
(615) 428-3706  
**Jim Good**, Service Mgr.  
(615) 767-8711  
**Hurley Kelly**, Assistant Service Mgr.  
(615) 287-2587  
**Roger Jackson**, Customer Support Mgr.  
(615) 210-1366  
**Chase Smagala**, Customer Service Rep.  
(931) 338-4380  
**Greg Whiteaker**, Rental Sales Rep.  
(615) 973-6729

### CHATTANOOGA

**Todd Nelson**, Regional Sales Mgr.  
(865) 599-1272  
**Eric Tucker**, Sales and Rental Coord.  
(865) 356-6017  
**Heath Smith**, Equip. Sales  
(423) 645-2224  
**Mike Brown**, Parts Mgr.  
(423) 802-0262  
**Jason Hicks**, Service Mgr.  
(423) 290-6801

### KNOXVILLE

**Todd Nelson**,  
Regional Sales Mgr.  
(865) 599-1272  
**Eric Tucker**, Sales and Rental Coord.  
(865) 356-6017  
**Lin Davidson**, Equip. Sales  
(865) 599-0587  
**Greg Kiser**, Equip. Sales  
(865) 776-1221  
**Larry Prater**, Forestry Equip.  
Sales Specialist  
(865) 599-9486  
**Don Ilgen**, Service Mgr.  
(865) 223-3191  
**Rick Herron**, Parts Mgr.  
(865) 659-5320  
**Steve McDaniel**,  
Assistant Service Mgr.  
(865) 556-6552  
**Danny Davis**,  
Customer Support Rep.  
(865) 202-1814  
**Wes Cowden**,  
Rental & Utility Sales Rep.  
(865) 388-5119

### TUPELO

**Darryl Thompson**,  
Regional Sales Mgr.  
(901) 346-9800  
**Chris Burke**, Sales Coord.  
(901) 288-7957  
**Chad Roberts**,  
Equip. Sales  
(662) 416-2962  
**Mark Holley**,  
Parts & Service Mgr.  
(662) 419-4082  
**Brad Hughes**,  
Shop Foreman  
(662) 678-1751

**David Hicks**,  
Customer Support Rep.  
(662) 317-0784

### MEMPHIS

**Darryl Thompson**,  
Regional Sales Mgr.  
(901) 346-9800  
**Chris Burke**,  
Assistant Regional  
Sales Mgr. and Rental Coord.  
(901) 288-7957  
**Jim Burford**, Equip. Sales  
(901) 412-9434  
**Dewey Smith**, Equip. Sales  
(901) 488-5304  
**Jimmy Spence**, Equip. Sales  
(731) 225-3257  
**Michael Hunter**, Parts Mgr.  
(901) 568-9773  
**James Ireland**, Service Mgr.  
(901) 482-7135

**James Sparks**,  
Assistant Service Mgr.  
(901) 481-4932

**Jordy Key**,  
Customer Support Rep.  
(870) 635-7033

**Mike Symon**,  
Rental Sales Rep.  
(901) 491-2151

### KINGSPORT

**Todd Nelson**,  
Regional Sales Mgr.  
(865) 599-1272  
**Eric Tucker**,  
Sales and Rental Coord.  
(865) 356-6017  
**Matt McQueen**,  
Equip. Sales  
(423) 360-4746  
**Junior Bowman**,  
Parts Mgr. (423) 817-2668  
**Gary McQueen**,  
Service Mgr. (423) 471-1900  
**Joey Baker**,  
Customer Support Rep.  
(423) 946-8109

Published by Construction Publications, Inc. for

**POWER**  
EQUIPMENT

www.powerequipco.com

THE POWER TO  
PERFORM

An equal opportunity, affirmative action employer

#### KNOXVILLE

3300 Alcoa Highway  
Knoxville, Tennessee 37920  
(865) 577-5563  
1-(800) 873-0961 (TN)

#### MEMPHIS

3050 Ferrell Park Cove  
Memphis, Tennessee 38116-3502  
(901) 346-9800  
1-(800) 873-0965 (TN)

#### CHATTANOOGA

4295 Bonny Oaks Drive  
Chattanooga, Tennessee 37406  
(423) 894-1870  
1-(800) 873-0963 (TN)

#### KINGSPORT

1487 Rock Spgs. Rd.  
Kingsport, Tennessee 37664  
(423) 349-6111  
1-(800) 873-0964 (TN)

#### NASHVILLE

1290 Bridgestone Parkway  
LaVergne, Tennessee 37086  
(615) 213-0900  
1-(800) 873-0962 (TN)

#### TUPELO

1545 Highway 45  
Salttillo, Mississippi 38866  
(662) 869-0283  
1-(800) 873-0967

**KOMATSU**®

Printed in U.S.A. © 2015 Construction Publications, Inc.



# A.S. FORNEA CONSTRUCTION

## Three divisions allow Oxford, Miss., company to complete turnkey site and building projects



▶ VIDEO

Andy Fornea,  
Owner

Very few college students can claim that they saved money while going to school. It's likely that fewer invested it in starting their own businesses. Andy Fornea did both.

"I always knew I wanted to be in business for myself," said Fornea, who founded Oxford, Miss.-based A.S. Fornea about 10 years ago, after graduating from the University of Mississippi (Ole Miss) with a business degree. "I took the money I had saved and bought four lots in a residential subdivision, then used some contacts I had with an investment company to pitch the idea of renting them out. I showed the investors the return on investment I thought they could get and sold them. The next step was to build the houses."

A.S. Fornea recently added a Komatsu D39PX-23 dozer. "The dozers are perfect for the size of jobs we generally work on," said Owner Andy Fornea. "The operators really like the visibility. The slant-nose allows them to see the blade and the material better than with other dozers. They're also well-balanced."



To do that, Fornea hired out everything from dirt work to the framing and final construction. Now, 10 years later, A.S. Fornea still subs out the building construction, but his own crews do the rest.

"It wasn't long before a small subdivision came up for bid, and I bid on the whole thing and got it," said Fornea. "The business started snowballing from there. Eventually, I bought my own dirt equipment, and we were off and running hard. We still offer complete turnkey packages, but now A.S. Fornea does the dirt work and subs out the paving and building construction. I've found that's the best fit for us."

### Public, private

A.S. Fornea's civil division handles all excavation work with three dirt crews. It provides complete site packages that include staking; clearing and grubbing; mass excavation; fine grading; retaining-wall construction; and utility installation. The company also has commercial and residential divisions.

"The commercial and residential divisions are basically building divisions," explained Fornea. "The commercial division works with developers to turn their designs or ideas into completed, turnkey projects. For the most part, the residential division handles construction of houses, subdivisions and apartment complexes on properties that I own and develop under another company called Fornea Construction Group. Either way, nearly everything we do is private, with the exception of public-works projects for the university. We have completed several large civil projects on the Ole Miss campus throughout the years."

Recently A.S. Fornea constructed a new road and parking lot near the university's





▶ VIDEO

Operator Beau Childs grades around new housing units with a Komatsu D51PX-22 dozer on a site in Oxford, Miss. "It's a good all-around machine," said Childs. "It has good power and visibility and is comfortable to operate. Komatsu is way ahead of the game on its dozers."



football stadium. Additional work included installing utilities and building retaining walls, as well as demolition of an old wastewater treatment plant.

The company also finished a 60-acre student-housing complex. A.S. Fornea imported more than 100,000 yards of dirt, in addition to moving about 45,000 yards of dirt on site. It installed retaining walls and put in utilities as deep as 34 feet.

Current work for A.S. Fornea in the Oxford area includes multiple subdivisions and an office park, which are scheduled to start in the spring of 2015. Outside of the Oxford market, A.S. Fornea is preparing to develop a condominium tower in Orange Beach, Ala.

Additionally, A.S. Fornea recently completed Tanglewood, a 26-unit condominium complex, as well as 607 South, another 12-condo and commercial development.

"Our territory consists of about a 30-mile radius of Oxford, but honestly, we rarely go

outside of town," said Fornea. "We have quite a bit to keep us busy right here, and from the residential aspect, we basically create our own projects, so we don't have to travel. I like that, and the staff does too."

### **Staff delivers success**

Fornea's staff now consists of about 30 people who he says are a big reason for the company's success.

"We have a lot of experience on staff, which is great, but more importantly, they're dedicated, hard-working and enjoy what they do," he said. "That ensures we get jobs done on time and on budget. The company certainly wouldn't be where it is today without them. They deserve a world of credit."

### **Komatsu, Power are perfect fits**

To move dirt, A.S. Fornea's civil division uses Komatsu equipment, including a PC210LC-10 excavator and D39PX-23 and D51PX-22 dozers. Fornea worked with Power Equipment Territory Manager Chad Roberts on the purchases.

*Continued . . .*



# A.S. Fornea takes care of its customers first

... continued

"Two items stand out to me when buying equipment. One is fuel efficiency, and the other is service after the sale," said Fornea. "Komatsu provides the fuel efficiency on every piece we own, as well as reliability, productivity and stability. The PC210 is great for clearing and grubbing and putting in utilities, including handling fairly large manholes.



A.S. Fornea Owner Andy Fornea (left) works with Power Equipment Territory Manager Chad Roberts to purchase Komatsu equipment. "I really appreciate everything that Power and Chad do for us. They treat us fairly, honestly and quickly when we need something," said Fornea.

An A.S. Fornea operator uses a Komatsu PC210LC-10 excavator to shape a bank on a project in Oxford, Miss.

▶ VIDEO



"The dozers are perfect for the size of jobs we generally work on," he added. "The operators really like the visibility. The slant-nose allows them to see the blade and the material better than with other dozers. They're also well-balanced."

Fornea tracks the Komatsu machinery with KOMTRAX, using the app on his mobile phone as he travels between jobsites. "It's a great tool that allows me to see fuel usage and if someone is idling excessively. I also like that Komatsu tracks the machinery and alerts me to error codes. Additionally, Power Equipment has eyes on the machines, so they know when they're due for service under the Komatsu CARE program. I'm a big believer in technology, such as GPS grading and telematics, and Komatsu is far-and-away the most technologically advanced equipment company out there, as far as I'm concerned. I really appreciate everything that Power and Chad do for us as well. They treat us fairly, honestly and quickly when we need something."

## Reevaluating for the future

A.S. Fornea continues to grow. Each year the company has expanded anywhere from 25 to 75 percent, according to Fornea. That led him to build a new headquarters, which the business recently moved into.

"We have plans for further growth, but probably not at the pace we have been growing," said Fornea. "I want to reevaluate where we are and make sure we don't jeopardize our ability to take care of the customer or ourselves. That's the most important thing we do."

While he's taking a new look at where the company is going in terms of growth, he's not changing his view on what the company does.

"I think we found our niche, and we've done well with it, so I'm not really looking to expand into other markets or areas. This is what we do; we're good at it; and it's helped us to become a successful, stable company with a good reputation. It's what I was hoping the business would eventually become when I started." ■





Scan to watch  
video about  
the Montabert  
V32 hydraulic  
breaker



# THE ANSWER HAS ARRIVED

Engineering Innovation since 1921

[www.montabert.com](http://www.montabert.com)  
Customer Service- 866-472-4373

Follow us on social media  
for regular updates!



**MONTABERT**



**POWER**  
EQUIPMENT

MEMPHIS, TN  
(901) 346-9800

KINGSPORT, TN  
(423) 349-6111

TUPELO, MS  
(662) 869-0283

KNOXVILLE, TN  
(865) 577-5563

CHATTANOOGA, TN  
(423) 894-1870

NASHVILLE, TN  
(615) 213-0900

**THE POWER TO  
PERFORM**

[www.powerequipco.com](http://www.powerequipco.com)

UNBEATABLE TEAM.



Close to  
our customers



# PASSION

The Wirtgen Group owes its strength to the excellence of its four product brands – Wirtgen, Vögele, Hamm and Kleemann – with their unique wealth of experience.

*Put your trust in the Wirtgen Group team.*



ROAD AND MINERAL TECHNOLOGIES

[www.wirtgenamerica.com](http://www.wirtgenamerica.com)

**POWER**  
EQUIPMENT

[www.powerequipco.com](http://www.powerequipco.com)

**KNOXVILLE**

3300 Alcoa Highway  
Knoxville, Tennessee 37920  
(865) 577-5563  
1-(800) 873-0961 (TN)

**MEMPHIS**

3050 Ferrell Park Cove  
Memphis, Tennessee 38116-3502  
(901) 346-9800  
1-(800) 873-0965 (TN)

**CHATTANOOGA**

4295 Bonny Oaks Drive  
Chattanooga, Tennessee 37406  
(423) 894-1870  
1-(800) 873-0963 (TN)

**KINGSPORT**

1487 Rock Spgs. Rd.  
Kingsport, Tennessee 37664  
(423) 349-6111  
1-(800) 873-0964 (TN)

**NASHVILLE**

1290 Bridgestone Parkway  
La Vergne, Tennessee 37086  
(615) 213-0900  
1-(800) 873-0962 (TN)

**TUPELO**

1545 Highway 45  
Saltillo, Mississippi 38866  
(662) 869-0283  
1-(800) 873-0967



# FIND AN ANSWER

## Industry leaders call on Congress to pass and find a way to pay for a long-term transportation plan

The Transportation Construction Coalition (TCC), a 31-member organization, is urging Congress to find a way to pay for, and pass, a new long-term surface transportation measure as soon as possible. If Congress fails to act, we believe it would lead to another self-imposed funding crisis that would undermine vital road, highway and transit repairs.

We worked hard to build broad consensus within a deeply divided Congress to invest in the nation's aging roads, bridges and transit systems. Members of Congress can either take advantage of that momentum or add transportation funding back to an already-long list of self-created crises threatening our economic vitality.

In July 2014, despite overall partisan gridlock, Congress overwhelmingly extended authorization for the surface-transportation program and enacted a temporary funding patch for the Highway Trust Fund (HTF). That patch ensures federal highway, bridge and transit investments will continue through May 2015. However, it was the fifth time in the past seven years that Congress took that approach, requiring nearly \$65 billion in supplemental funding to avoid significant cuts to transportation investments. On average, the HTF provides 52 percent of the funding for highway and bridge capital investments made by the nation's state-transportation departments each year.

Congress needs to 'keep the horse before the cart' and address the trust fund's long-term revenue problem, as was done in the 1997 and 2004 tax bills. Then it can develop and properly fund a six-year program bill early this year. 'Status quo' funding levels would simply perpetuate the worsening traffic congestion and the inadequate physical condition of the nation's highway and transit network.

The latest Congressional Budget Office projections indicate Congress will need to identify an additional \$7 billion just to preserve highway and transit funding for the last four months of Fiscal Year 2015. Federal data also show maintaining current program funding beyond 2015 will require an average of \$16 billion in additional revenue each year. That is the revenue equivalent of a 10-cent increase in the federal gas tax.

Despite widespread desire for a multi-year surface-transportation program reauthorization bill to boost economic competitiveness and job creation, such legislation cannot move forward until a long-term funding solution is in place. Congress should identify and pass legislation to fix the HTF to ensure Americans and the U.S. economy continue to benefit from a world-class transportation network. ■

In July 2014, Congress extended authorization for the surface transportation program and enacted a temporary funding patch for the Highway Trust Fund (HTF), the fifth time it has done so in the past seven years. The Transportation Construction Coalition urges Congress to pass a long-term highway bill instead.

*Established in 1996, the Transportation Construction Coalition (TCC) includes 31 national associations and labor unions with direct market interest in the federal transportation programs. The TCC focuses on the federal budget and surface transportation program policy issues. The TCC is co-chaired by the American Road & Transportation Builders Association and the Associated General Contractors of America.*



# POSITIVE FORECAST

## Outlook for construction spending is sunny, led by significant rise in single-family starts

Forecasters predict hefty growth in the construction sector during 2015 as the overall economy continues to improve. Dodge Data & Analytics (DD&A), formerly McGraw-Hill Construction, said factors such as easier financing, an investor shift to real estate and an increase in construction bond measures being passed will boost construction spending 9 percent in 2015.

Commercial, institutional, single- and multi-family housing and public-works projects will set the pace. DD&A said both commercial and single-family housing could see a 15 percent increase while the others should rise by 5 to 9 percent. Energy and electricity building fell last year and will continue to slide, according to DD&A. It predicts manufacturing-plant construction will drop by 16 percent after ramping up the past two years.

“The construction expansion should become more broad-based in 2015, with support coming from more sectors than was often the case in recent years,” said DD&A Chief Economist and Vice President Robert Murray.

Housing continues to strengthen with building permits during the final months of last year at more than a six-year high. The Commerce Department said groundbreaking for single-family homes increased 4.2 percent to a seasonally adjusted 696,000 units. At the same time, multi-family starts decreased 15.4 percent year-over-year, but the combination of single- and multi-family starts topped 1 million, the highest number since 2008.

### Fueled by low rates, demand

Economists and organizations that study the markets believe single-family housing will continue to rise. A report from the Mortgage Bankers Association showed new-home loan applications recently surged as potential buyers take advantage of relatively low interest rates. The National Association of Homebuilders (NAHB) cites a growing economy, low mortgage rates and pent-up demand as factors that will further expand the housing market.

“Single-family builders are feeling good,” said NAHB Chief Economist David Crowe. “They are not overly confident, but confident enough to keep moving forward. This is mostly due to significant pent-up demand and steady job and economic growth that will allow trade-up buyers who have delayed home purchases due to job insecurity to enter the marketplace.”

NAHB said single-family home production is expected to rise by as much as 26 percent this year, topping 800,000 units, and it should reach 1 million units in 2016. If that’s the case, the market would be back to 90 percent of what was considered normal housing activity (using the period of 2000 to 2003 as a benchmark) next year.

Forecasters predict hefty growth in the construction industry during 2015 led by single-family housing, which could see a 15-percent increase, according to Dodge Data & Analytics.







Commercial construction could see a 15-percent rise, with the hotel market especially strong. According to the Architectural Building Index, near-term activity overall is at its highest level in several years.

## Spike in hotel construction

Hotel construction is also marching forward with great strength, recently hitting a five-year high, with more than 3,500 projects and more than 443,000 rooms under construction, according to Hotel News Resource. The market posted double-digit year-over-year gains, a trend that's carried on for four consecutive quarters. Last year marked the fifth consecutive year that guestroom demand growth exceeded supply growth, and occupancy reached a 17-year high, as did the average daily rate and revenue per room.

"Developers are extremely positive with development conditions being near perfect," said Hotel New Resource. "Because of the industry's favorable metrics, lenders are increasingly more attracted to hotel investments, making funds easier to access by developers. Interest rates are near record lows and are expected to remain so at least through mid-2015. Favorable economic conditions, record-setting operating metrics and the positive outlook for the next few years have combined to make it a most opportune time for hotel developers."

According to the Architectural Building Index, near-term activity overall is at its highest level in several years. Contractors report a backlog in work, and the amount of upcoming work they

have on the books is higher than at any other time in history.

## Highway bill still in limbo

Infrastructure investment continues to lag despite the public's apparent willingness to invest in new roads, bridges and water systems. According to The Kiplinger Letter, highway spending is about 30 percent higher than revenues generated from the fuel taxes that pay for it. The gap has widened during the past few years due to less driving and more fuel-efficient vehicles. During the November 2014 election, several states approved ballot initiatives to raise the funds necessary to build, repair and maintain highways, transit and other resources.

Congress has yet to commit to new multi-year highway legislation. The previous measure (MAP-21) expired last fall, and Congress passed a short-term extension to keep the Highway Trust Fund from running out of money. The extension runs out this May. A recent Society of Civil Engineers Report Card gave the nation's infrastructure a grade of D-plus

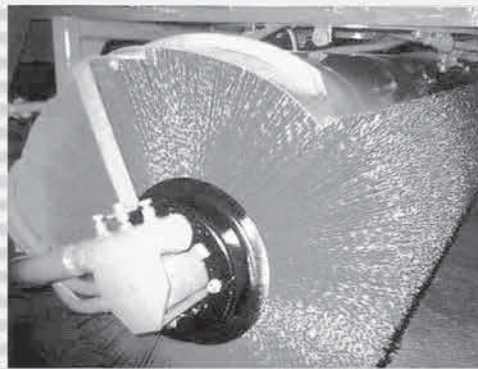
"The outcomes of these elections demonstrate that Americans value well-maintained infrastructure and are willing to make the investment," said Robert Stevens, President of ASCE. ■



# It's a clean sweep...



*Broce Broom*  
THE LEADER



With a wide range of options, Broce Brooms are versatile enough to handle nearly any sweeping challenge. From optional curb sweepers and water spray systems to scraper blades and a choice of engines, you can customize your Broce Broom to meet individual jobsite needs.

All self-propelled Broce Brooms have a standard hydrostatic drive and a compact wheel base for better maneuverability in tight places. Our sound-suppressed cab provides maximum operator comfort and visibility for optimal productivity and safety.

To find out how Broce Brooms can help you make a clean sweep every time, contact your Broce dealer for a demonstration.

KNOXVILLE, TN  
(865) 577-5563

NASHVILLE, TN  
(615) 213-0900

CHATTANOOGA, TN  
(423) 894-1870

MEMPHIS, TN  
(901) 346-9800

KINGSPORT, TN  
(423) 349-6111

TUPELO, MS  
(662) 869-0283

**POWER**  
EQUIPMENT THE POWER TO PERFORM



# BACK TO WORK

## AGC analysis shows construction unemployment falls to lowest level in eight years

Construction unemployment recently reached its lowest rate since 2006, falling to 6.4 percent, according to an Associated General Contractors of America (AGC) analysis. Construction employers added 12,000 jobs in October 2014, bringing the total to a little more than 6 million, the highest since May 2009.

The yearly gain from October 2013 to October 2014 was 231,000 jobs, a 3.9-percent increase. Residential construction fueled more than half the gains with 130,600 new workers, while non-residential added just under 100,000. According to AGC Chief Economist Ken Simonson, there are fewer unemployed construction workers than at any time in the past eight years.

“For the last several months, the construction industry has added jobs at double the all-industry rate of 1.9 percent,” said Simonson. “Construction wages, which were already higher than the private-sector average, rose 2.6 percent in the last year – the fastest rate since early 2010 – as contractors ramped up their search for qualified workers.”

### Not all good news

All construction workers averaged 39.2 hours per week, tying the highest mark since March 2006. Simonson said that along with low unemployment and accelerating wage gains, this points to “an industry that may be on the verge of acute difficulty filling key positions.”

AGC officials said a survey of nearly 1,100 member firms released in October 2014 showed 83 percent of respondents reported difficulty finding craft workers, and

61 percent said other professional positions were hard to fill. They are urging federal, state and local officials to enact measures AGC identified in its Workforce Development Plan that will make it easier for schools, local associations and private firms to establish career and technical education and training programs.

“The construction industry has made an impressive contribution to the nation’s unemployment gains this year,” said AGC CEO Stephen Sandherr. “But those gains are in jeopardy unless schools, colleges and training programs can refill a pool of talent that is rapidly drying up. ■

An Associated General Contractors of America (AGC) analysis showed construction unemployment recently reached its lowest rate since 2006, falling to 6.4 percent. According to AGC Chief Economist Ken Simonson, there are fewer unemployed construction workers than at any time in the past eight years.



# K-TEC



## GROUNDBREAKING

SCRAPERS RANGING FROM 25-53 CUBIC YARDS.

[www.ktec.com](http://www.ktec.com)

**POWER**  
EQUIPMENT

[www.powerequipco.com](http://www.powerequipco.com)

KNOXVILLE, TN  
(865) 577-5563  
CHATTANOOGA, TN  
(423) 894-1870  
NASHVILLE, TN  
(615) 213-0900

MEMPHIS, TN  
(901) 346-9800  
KINGSPORT, TN  
(423) 349-6111  
TUPELO, MS  
(662) 869-0283

Authorized K-Tec Dealership





# KOMATSU DEMO DAYS

## The world's first *intelligent* Machine Control excavator was the star – but not the only attraction

Komatsu Demo Days, held late in 2014 at the Komatsu Training & Demonstration Center in Cartersville, Ga., was the first opportunity for contractors to try the new PC210LCi-10 – the world's first "intelligent" hydraulic excavator (see related article).

"Contractors everywhere are embracing grade-control technology as a way to move dirt more efficiently," said Komatsu America Director of Marketing Communications Bob Post. "For other manufacturers, that means an "add-on" aftermarket mast and cable system. Komatsu is truly at the forefront by integrating such technology at the factory – first with our *intelligent* Machine Control (iMC) dozers, and now with our intelligent excavator."

At Demo Days, Komatsu had four PC210LCi-10s for attendees to "test drive," along with the complete line of iMC dozers. Beyond the iMC units, Komatsu displayed other Tier 4 machines, including a PC490LC-11 excavator, a D155AX-8 dozer, a WA600-6 wheel loader and the new HM300-5 articulated truck. Komatsu also provided tours of its Chattanooga, Tenn., manufacturing plant, as well as held informational seminars on Efficient Machine Operation, KOMTRAX and the benefits of No Idling.

"The object of Demo Days is to let contractors get their hands on Komatsu machines and kick the tires, so-to-speak," said Post. "Beyond operating the equipment itself, we want to show customers how to get the most out of the technology that we build into each machine. It's that technology that truly sets Komatsu apart. When it's used properly, it will help customers significantly lower their machine owning and operating costs." ■



Demo Days includes informational seminars and videos on Efficient Machine Operation, KOMTRAX and the benefits of No Idling.



Komatsu America Director of Marketing Communications Bob Post introduces the machines and the ground rules.

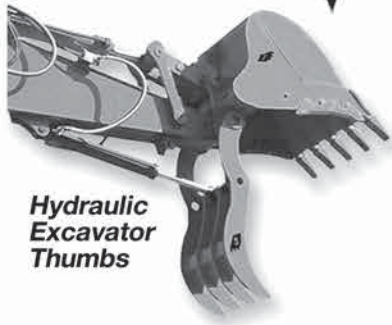


Takeshi "Ken" Takaura (left), who designed the new PC210LCi-10, was on hand to explain the *intelligent* Machine Control excavator.

▶ VIDEO



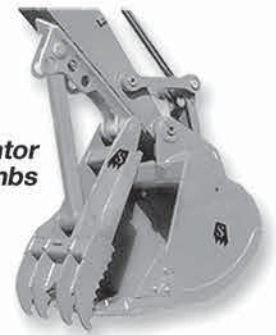
# **Solesbee's<sup>®</sup>** Equipment & Attachments LLC



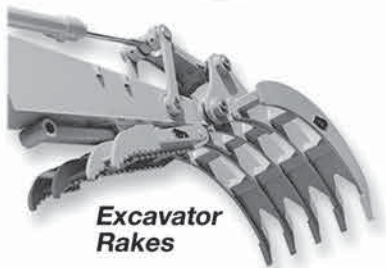
**Hydraulic  
Excavator  
Thumbs**



**Excavator Grapples**



**Excavator  
Thumbs**



**Excavator  
Rakes**



**Excavator  
Wood  
Shears**



**Excavator  
Demolition  
Grapples**



**Stump  
Pullers**

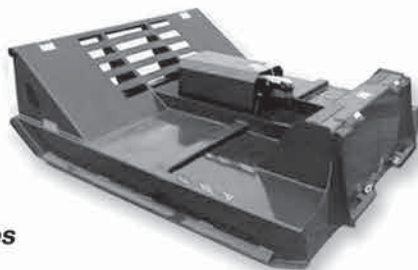


**Loader Rakes  
with  
Top Clamp**



**Skid Steer  
Bucket Grapples**

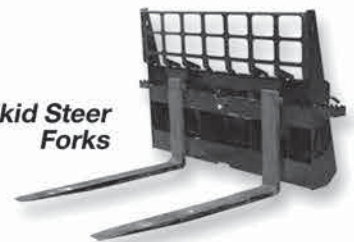
**Skid Steer  
Brush Cutters**



**Skid Steer  
Buckets**



**Skid Steer  
Grapple Rakes**



**Skid Steer  
Forks**

All attachments available for on time delivery!

770-949-9231

**800-419-8090**

[www.solesbees.com](http://www.solesbees.com)





Learn more

# EXCAVATION EXCLUSIVE

## Komatsu's PC210LCi-10, world's first *intelligent* Machine Control excavator, minimizes overexcavation

Excavation companies want to move dirt as quickly and efficiently as possible, but conventional methods sometimes limit their ability to do that. Constantly checking grade is time consuming, and overexcavating is costly. Komatsu's new PC210LCi-10, the world's first *intelligent* Machine Control excavator, is a huge step forward in solving those issues with exclusive control function that goes beyond simple guidance to semi-automatically limit overexcavation and trace a target surface.

"From rough-digging to finish-grading, the PC210LCi-10 offers improved efficiency and accuracy compared to traditional methods," said Peter Robson, Senior Director of Intelligent Machine Control. "Once the target elevation is reached, no matter how hard an operator tries to move the joystick control to lower the boom, the excavator won't allow it. Minimizing overexcavation also reduces wasted time and the costs associated with placing and compacting new, expensive material to replace what didn't need to be removed in the first place."

Advanced functions contribute to the PC210LCi-10's ability to effectively reach target elevation without overexcavating, including Auto Grade Assist. As the operator moves the arm, the boom adjusts the bucket height automatically, tracing the target surface and minimizing digging too deep. This allows the operator to rough-dig without worrying about the design elevation, as well as fine-dig by operating the arm lever only. By holding down the lever to move the boom down, the working range is expanded.

Another new function is Auto Stop Control. During boom or bucket operation, the work equipment automatically stops when the bucket edge reaches the design surface.

The excavator also comes equipped with Minimum Distance Control. The PC210LCi-10 controls the bucket by automatically selecting the point on the bucket closest to the target surface. If the machine is not facing a sloped surface at a right angle, it will still follow the target surface and minimize digging below it.

### New large touchscreen display

The PC210LCi-10 features a factory-installed, fully integrated *intelligent* Machine Control system that includes Global Navigation Satellite System (GNSS) antennas; stroke-sensing hydraulic cylinders for the boom, arm and bucket; and an IMU (inertial measurement unit). The system works in harmony to provide real-time bucket-edge positioning in relation to the machine

*Continued . . .*

Komatsu's new PC210LCi-10 *intelligent* Machine Control excavator semi-automatically limits overexcavation and traces a target surface.



Peter Robson,  
Komatsu Senior  
Director, Intelligent  
Machine Control



Jason Anetsberger,  
Komatsu Product  
Manager, Intelligent  
Machine Control

#### Quick Specs on the Komatsu PC210LCi-10 Excavator\*

| Model       | Operating Weight   | Net Horsepower | Bucket Capacity   |
|-------------|--------------------|----------------|-------------------|
| PC210LCi-10 | 48,950-52,036 lbs. | 158 hp         | 0.66-1.57 cu. yd. |

\*All specifications are the same as a conventional PC210LC-10.

#### ▶ VIDEO



# The PC210LCi-10 brings automatic features to excavators

... continued

and the job surface, limiting the ability to dig beyond the target elevation and making accurate finish grading possible.

The bucket tip/edge and the design surface are always displayed on the new, full-color, multifunction 12.1-inch touchscreen monitor, eliminating the wait time associated with conventional systems. Information such as real-time and as-built status, a magnified fine-grading view or a 3D view, may be displayed simultaneously.

The PC210LCi-10 makes grading easy and accurate with a facing-angle compass, a light bar and audio guidance that alerts operators as they get closer to final grade. The orientation and color of the facing-angle compass's arrow shows the operator the facing angle of the bucket edge relative to the target surface, allowing for the bucket to be accurately positioned square to the target surface, which is especially useful when finishing slopes.

Colors on the light bar also show the bucket-edge position relative to the target

surface. It's located on the left side of the monitor for easy viewing during operation and increased efficiency. Audio alerts help the operator recognize the target through unique tones that can be programmed for various bucket-edge distances from the target surface.

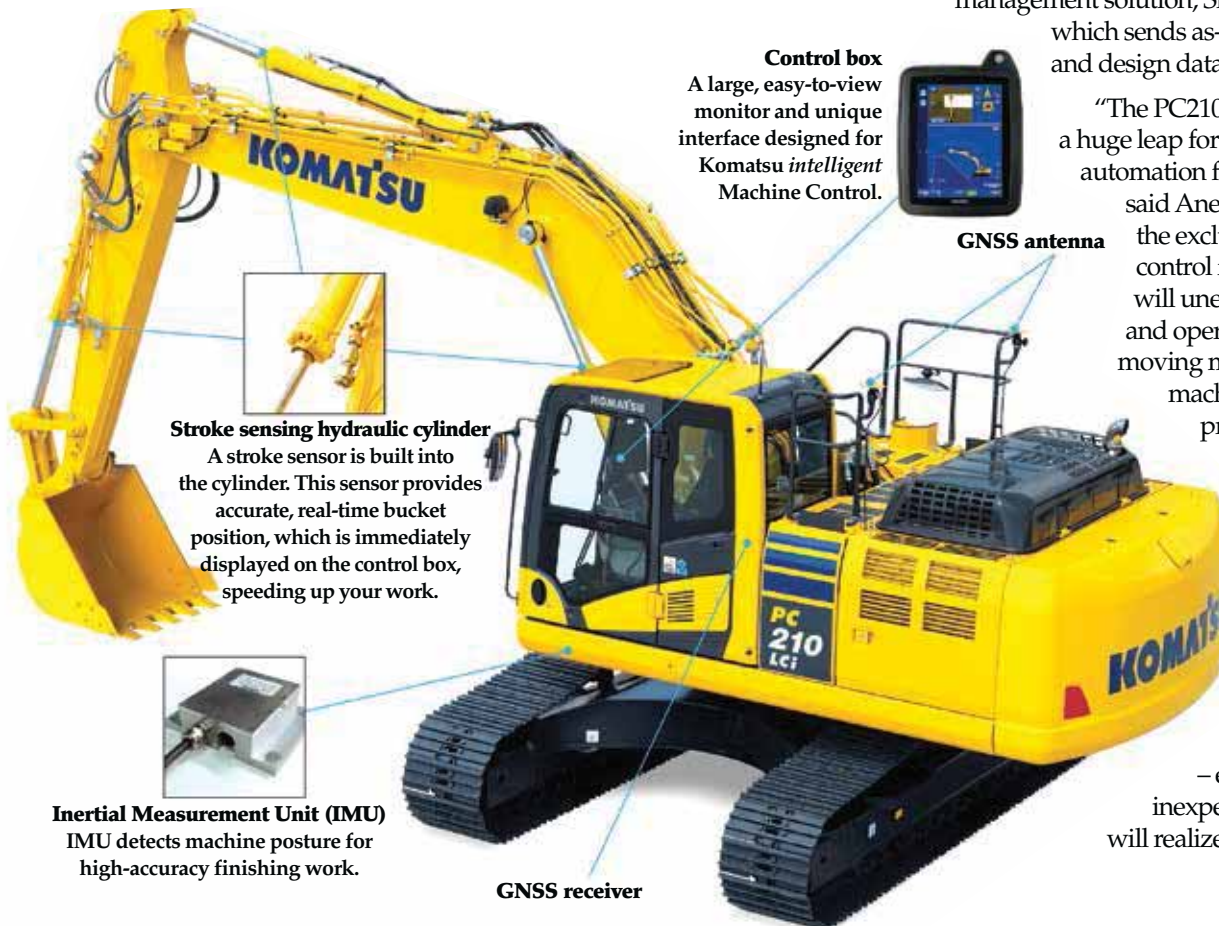
"Operators always know where they are in relation to where they eventually want to be," said Jason Anetsberger, Product Manager, Intelligent Machine Control. "Operators can set audio guidance alerts so that different tones are heard the closer the bucket is to final elevation. For instance, one tone may indicate 2 feet away, while a different tone is heard at 1 foot. Customers who tested the machine really liked the audio alerts because they allow the operator to focus on digging without stopping to check relation to final grade."

## Two-way communication

The PC210LCi-10 comes standard with a cellular modem that supports troubleshooting from afar, via the Internet. Additionally, this hardware can be used by Topcon's jobsite management solution, Sitelink3D Enterprise, which sends as-built data to the office and design data to the machine.

"The PC210LCi-10 represents a huge leap forward by bringing automation features to excavators," said Anetsberger. "Thanks to the exclusive semi-automatic control function, customers will unearth their productivity and operators can focus on moving material while the machine semi-automatically protects the target surface. The efficiency improvement, greater value and operation simplicity mirror what has been proven with Komatsu's established *intelligent* Machine Control dozer products – experienced and inexperienced operators alike will realize the benefits." ■

The PC210LCi-10 *intelligent* Machine Control excavator features a factory-installed, fully integrated *intelligent* Machine Control system that includes GNSS antennas, stroke-sensing hydraulic cylinders for the boom, arm and bucket and an IMU (inertial measurement unit).



**Control box**  
A large, easy-to-view monitor and unique interface designed for Komatsu *intelligent* Machine Control.

**GNSS antenna**

**Stroke sensing hydraulic cylinder**

A stroke sensor is built into the cylinder. This sensor provides accurate, real-time bucket position, which is immediately displayed on the control box, speeding up your work.

**Inertial Measurement Unit (IMU)**

IMU detects machine posture for high-accuracy finishing work.

**GNSS receiver**



# Innovative. Intelligent. Integrated.



## D61i-23

## Next Generation Machine Control

**No Masts**

**No Cables**

**No Connections**

Factory installed Intelligent Machine Control — standard on the new D61i-23. Automated dozing — 1<sup>st</sup> to last pass with finish grade performance. Intelligent blade assistance minimizes track slip and improves efficiency.

Komatsu — Customer driven solutions.



Conventional  
Machine Control



Scan here to see the video.

# KOMATSU®

[www.komatsuamerica.com](http://www.komatsuamerica.com)

# KOMATSU FINANCIAL

Financing Your Success



The experienced professionals at **Komatsu Financial** provide financing solutions to help grow your business. Working with your Komatsu dealer, we can provide the following:

- √ New and Used Equipment Financing
- √ Leasing Programs
- √ Parts and Service Financing
- √ Equipment Credit Lines
- √ Flexible Terms and Payment Plans
- √ Industry Expertise
- √ Superior Customer Service

# KOMATSU®



[www.komatsuamerica.com](http://www.komatsuamerica.com)

[kfcustomerservice@komatsuna.com](mailto:kfcustomerservice@komatsuna.com)  
888-500-6001



## ENHANCED EXCAVATION

### Komatsu's new Tier 4 Final PC290LC-11 excavator reduces emissions and lowers fuel consumption

Productivity, dependability and efficiency are all traits users have come to expect from Komatsu hydraulic excavators, and they will find those attributes and more in the new PC290LC-11. With a Tier 4 Final engine, it features greater efficiency, lower fuel consumption, improved operator comfort and enhanced serviceability to maximize productivity while lowering operating costs.

Hydraulic-system enhancements contribute to greater efficiency by reducing hydraulic loss. Komatsu designs and produces all major components, including the powerful 196-horsepower engine, hydraulic pumps, motors and valves. The integrated design uses a Closed Center Load Sensing System (CLSS) that takes hydraulic efficiency to the next level by using Variable Speed Matching technology. Variable Speed Matching allows the engine speed

to adjust based on the hydraulic pump output, and the CLSS improves fuel efficiency and provides quick hydraulic response.

The Tier 4 Final engine further reduces NOx emissions by using diesel exhaust fluid (DEF) and Selective Catalytic Reduction. An advanced electronic control system manages airflow rate, fuel injection, combustion parameters and aftertreatment functions to optimize performance, reduce emissions and provide advanced diagnostic capability. The result is lower fuel consumption without performance loss, compared to the highly popular Dash-10 model it replaces.

*Continued . . .*



**Rob Orłowski,**  
Product Manager

#### Quick Specs on the Komatsu PC290LC-11 Excavator

| Model      | Operating Weight   | Net Horsepower | Bucket Capacity   |
|------------|--------------------|----------------|-------------------|
| PC290LC-11 | 66,359-68,122 lbs. | 196 hp         | .76-2.13 cu. yds. |



Komatsu's new Tier 4 Final PC290LC-11 maintains the productivity of its predecessor with enhancements that increase efficiency and lower fuel consumption. New features include an Operator Identification System and an Auto Idle Shutdown function.

# The PC290LC-11 is great for high-performance applications

... continued

“Users can track fuel consumption and other vital information through the latest KOMTRAX® monitoring technology, which is available via the web or through our mobile app on their smart phones or other devices,” said Product Manager Rob Orłowski. “Data now includes DEF levels, ambient air temperatures and pressures. A new Operator Identification System reports key operating information for as many as 100 operators, and the new Auto Idle Shutdown function helps improve operating costs by reducing unnecessary idle time.”

## More comfortable operators

Komatsu improved operator comfort with a standard air-suspension high-back seat that has newly designed, fully adjustable armrests. Also incorporated into the quiet cab is an auxiliary input to connect external devices to play music through stereo speakers and two 12-volt power ports. Additionally, optional joysticks with proportional controls for operating attachments are available.

Operators can now check DEF fluid levels through the 7-inch LCD monitor that features enhanced capabilities. They can see operational records, fuel-consumption history and utilization information, and operators can use the monitor to easily select from six working modes to match machine performance to the application. Users can change standard auxiliary one-way

flow to bidirectional for attachment flexibility, and attachment control lets users store up to 10 attachments in the monitor. The ATT/E mode allows operators to run attachments in economy mode for maximum efficiency.

## Easier service access

The PC290LC-11 provides enhanced service access in order to reduce costly downtime. It has guardrails on both sides of the upper structure for better accessibility to the service area. The radiator and hydraulic-oil cooler are mounted side-by-side, making it easier to maintain and service those components.

The excavator is equipped with Komatsu’s exclusive Equipment Management Monitoring System, which has improved diagnostic features that give operators and technicians better monitoring and troubleshooting capabilities. It continuously monitors all critical systems and preventive maintenance, as well as provides troubleshooting assistance to minimize diagnosis and repair time.

Scheduled maintenance on all Tier 4 machines is covered complimentary by the Komatsu CARE program for the first three years or 2,000 hours. Each service is done by a certified distributor technician and includes a 50-point inspection. The program also includes two Komatsu Diesel Particulate Filter exchanges in the first five years.

## Built on a solid foundation

Komatsu’s PC290LC-11 maintains the productivity features of the popular Dash-10 model it replaces, such as a heavy-duty frame that’s built on a PC360LC undercarriage for excellent stability and long life. Its long arm and long boom provide a 22-foot, 8-inch digging depth, making it a good fit for digging foundations and deep utility trenches, in addition to moving dirt in mass-excavation applications. When needed, operators can boost the digging force for 8.5 seconds with Power Max.

“As with all our new Tier 4 Final machines, the PC290LC-11 was built on the solid foundation Komatsu started with its previous models,” said Product Manager Rob Orłowski. “The PC290LC-11 is a stable and reliable machine, designed for applications where high performance is required.” ■

The PC290LC-11 features a heavy-duty frame that provides excellent stability and long life. It’s a good fit for digging foundations and deep utility trenches and moving dirt in mass-excavation applications.





# WA500-7

From Komatsu - The Loader Experts



The WA500-7 Tier 4 Interim Wheel Loader is a class-leading performer in the aggregate industry with improvements in production, fuel efficiency, operator comfort and serviceability.

- Large-capacity torque converter with lock-up delivers power, speed and efficiency.
- New operator's cab offers improved visibility and ergonomics.
- Efficient Tier 4 Interim engine provides up to a 7% reduction in fuel consumption.
- Komatsu CARE provides complimentary Tier 4 maintenance, including Komatsu Diesel Particulate Filter exchange. Contact your Komatsu distributor for details.

# KOMATSU®



[www.komatsuamerica.com](http://www.komatsuamerica.com)

# EXPLORE the Future of Mining®



# KOMATSU®

Born from a long tradition of excellence  
in electric truck design and production.

## 930E-4

Electric Haul Truck

[www.komatsuamerica.com](http://www.komatsuamerica.com) 1-847-437-5800



**The class of the Ultra-Class!**





# NEW ARTICULATED TRUCK

## Komatsu's HM300-5 maximizes productivity in a variety of applications

You care about reducing emissions, but chances are you're more concerned that your new machines will move the same amount of material as efficiently as your current equipment. Komatsu's new Tier 4 Final HM300-5 articulated haul truck does that and more.

The HM300-5 maintains the productivity of its predecessor, with a 30.9-ton payload; two single-staged body-lift cylinders that provide a 70-degree dump angle; and selectable working modes that allow the operator to choose between economy and power modes to match the truck's performance to the application or working conditions. Its low 9-foot, 2-inch loading height easily pairs with 30- to 60-ton excavators or 5- to 7.5-yard wheel loaders.

Additionally, it has Komatsu's Traction Control System that automatically provides optimum traction when operating in soft ground conditions. If conditions worsen and it detects tire slippage, the inter-axle-lock kicks in. If tire slippage continues, four independent brakes can be applied to the slipping wheels to regain traction.

"The HM300-5 is ideal for a variety of applications, from large or small jobs moving dirt for site preparation to large-scale material processing operations with challenging haul profiles," said Komatsu Product Manager Joe Sollitt. "It offers great fuel economy and is ideal for anyone who requires high productivity, even in less-than-ideal conditions."

### Standard Payload Meter

Keeping track of production is easier with a standard, integrated Payload Meter that displays the loaded-material weight on an LCD monitor inside the cab. Externally, a pair of lamps illuminate green, yellow or red, triggered as the payload increases through three different ranges.

The Payload Meter optimizes productivity by preventing under- and overloaded haul cycles. Data is stored on board and can be accessed by plugging a laptop into a port in the truck or remotely via KOMTRAX.

"The Payload Meter system allows our customers to monitor production on a daily, weekly or monthly basis," explained Sollitt. "The system also stores very detailed data to allow for full production studies. Komatsu also made the HM300-5 easy to service, with a lightweight, fiberglass engine hood and a cab that tilts rearward for easy access to the transmission and hydraulics. An electrically powered tilt function is now standard. Of course, Komatsu covers scheduled maintenance complimentary for the first three years or 2,000 hours with the Komatsu CARE program, which has been expanded to cover the new Tier 4 Final components." ■



Joe Sollitt,  
Komatsu  
Product Manager

Komatsu's new HM300-5 articulated haul trucks feature a 30.9-ton payload capacity and a standard Payload Meter that displays loaded material weight on the truck's LCD monitor. External display lamps provide the same information for the loader operator, reducing under or overloading.

### Quick Specs on the Komatsu HM300-5 Articulated Truck

| Model   | Gross Vehicle Weight | Net Horsepower | Payload   |
|---------|----------------------|----------------|-----------|
| HM300-5 | 117,892 lbs.         | 324 hp         | 30.9 tons |





# HIGH-CAPACITY FELLING

## Komatsu's new S132 harvester head provides excellent productivity even in the toughest applications



Steve Yolitz,  
Manager,  
Marketing Forestry,  
for Komatsu  
America Corp.

One harvester head that is suited for a wide variety of felling applications is a major advantage for forestry operations. Komatsu's new S132 fits the bill and is an excellent choice in woods where crooked trees and tough branches are part of the project.

The high-capacity S132 is the second in Komatsu's new S-series family of "squeeze-style" heads. Its recommended working range is 6- to 17-inch diameter trees with a cutting diameter up to 28.3 inches. It is available installed on Komatsu 931.1 and 941.1 harvesters and also as a loose head that can be installed on other carriers.

Komatsu's new S132 harvester head performs in a wide variety of felling applications with a recommended cutting diameter up to 28.3 inches. Its new two-driven roller, two-motor squeeze-style feed system is specifically designed to handle tough or crooked stems.



The new two-driven roller, two-motor squeeze-style feed system is specifically designed to handle tough or crooked stems. The unique design allows stems to rotate within the head itself, facilitating the feed of forked, crooked and double stems. New self-cleaning, V-Steel Softgrip™ feed rollers maximize grip while minimizing log damage, and the new cast-steel feed-roller arms provide high reliability and durability.

Built on a proven, robust-frame design, the S132 provides excellent durability and reliability, as well as protects key components. The 360-degree rotator, a 128-degree tilt-link angle and an effective swing-damping/braking system ensures fast-feeding performance and reduces head-frame stress when harvesting and/or reaching on downhill slopes. Standard protective covers on the tilt link and between the tilt link and the hood help protect the S132 from packed snow or accumulating debris.

### Five delimiting knives

Designed on the principle that the delimiting knives carry the trunk, the head is equipped with four moveable delimiting knives, three of which are hydraulically controlled. The fourth is an automatically pressure-controlled floating top knife with a sensor to manage Komatsu's Flex Friction Control System™. An additional fifth delimiting knife is fixed and located in the bottom of the frame, just above the saw box and is used when "predelimiting" of trees is needed or before the head is attached on the tree.

"The S132's robust design, high capacity, and ability to perform in very tough felling applications makes this an excellent harvester-head choice for many forestry operations," said Steve Yolitz, Manager, Marketing Forestry for Komatsu America Corp. ■



# DEMOLITION WORKHORSE.

## THE GDR DEMOLITION RECYCLER

THE ALL-PURPOSE PROCESSING AND CUTTING ATTACHMENT THAT MINIMIZES DUST, NOISE AND FLYING DEBRIS WHILE MAXIMIZING PRODUCTIVITY IN HIGH-REACH AND STANDARD DEMOLITION PROJECTS.



**GENESIS**

The Promise of Performance.

[GENESISATTACHMENTS.COM](http://GENESISATTACHMENTS.COM)

Division of  
**IES** INTERNATIONAL  
EQUIPMENT  
SOLUTIONS

©2013 Genesis Attachments, LLC

The Genesis Demolition Recycler is designed for concrete processing and downsizing concrete and debris for recycling. A large jaw size and impressive power make it the perfect tool for high-reach and standard demolition projects. And with pulverizer, concrete cracker and shear jaw options, the GDR delivers whether your application involves crushing concrete and brick, cutting pipe, rebar or medium-gauge steel, or downsizing larger concrete. Contact your local Power Equipment location for additional information.

**LOCATIONS:** Tennessee  
Chattanooga  
(423) 894-1870  
Kingsport  
(423) 349-6111

Knoxville  
(865) 577-5563  
LaVergne  
(615) 213-0900  
Memphis  
(901) 346-9800

Mississippi  
Tupelo  
(662) 869-0283



Scan to  
watch  
video.

**POWER**  
EQUIPMENT

# NO IDLE 2.0

## Latest initiative aims to reduce excessive idling and help your operators save you money



**Bob Post,**  
Komatsu Director  
of Marketing  
Communications



**Goran Zeravica,**  
Komatsu Distributor  
Development Manager

A few years ago, Komatsu began a mission to reduce excessive idling. Why? Because it negatively affects your bottom line. Komatsu continued its effort with a second No Idle Initiative, tracking more than 2,800 companies that signed up for the campaign, which lasted for three months. The participants could access training via the web and were given materials to promote the initiative, including items in Spanish and French-Canadian if requested.

During this initiative, 13 percent of participants received “High Achiever” status for all three months, meaning they reduced idle time by at least 5 percent each month, compared to a baseline measurement done before the initiative started. On average, this group reduced idle time by 15 percent. About half of participants earned Komatsu’s High Achiever status at least one month during the campaign.

Komatsu’s latest No Idle Initiative built on the success of its first, which was designed to bring awareness to excess idling and its detrimental effects. More than 2,800 companies participated in Komatsu’s second No Idle Initiative.



“Unnecessary idling wastes fuel; shortens the time between scheduled maintenance intervals, which increases downtime; and wracks up unproductive hours that lower resale costs when you decide to trade-in or sell a machine,” said Goran Zeravica, Komatsu Distributor Development Manager. “In nearly every case, it would be better to shut down a machine when it’s not in production.”

As part of Komatsu’s efforts to end excessive idling, it launched a very successful “No Idle Initiative” in 2012. The main goal during that campaign was for each participant to reduce idle time by 20 percent. About 25 percent of the 1,200 participants achieved that mark or better, and several more came close.

“We geared this campaign more toward operators who are on the front lines when it comes to idle time, because that’s what customers said was most important after the last initiative,” said Bob Post, Komatsu Director of Marketing Communications. “It included several promotional items that participants could put in the cabs of their machines or place in other strategic locations on the jobsite or in the office as constant reminders to idle for only five minutes during nonproductive times, shut down the machine at lunch and use a three-minute cool down at the end of the day.”

### “Socially responsible”

Post and Zeravica said both initiatives proved successful, and Komatsu will continue to use campaigns such as No Idle to promote awareness of cost-saving measures that reduce owning and operating expenses. “We consider this socially responsible marketing that’s designed to help customers save money,” said Post. “Our aim is to promote additional meaningful ways to do that, such as using economy mode versus power mode whenever applicable.” ■





# Customer Care

From Komatsu - The Product Support Experts



You need your machines running to keep your business running. And you need complete confidence in your expert service team to keep them running at maximum productivity.

Komatsu certified, factory-trained technicians have the knowledge and determination to make repairs right the first time. Our parts inventory and distribution systems allow us to get most replacement parts to you in 24 hours or less.

At Komatsu, customer satisfaction is our number-one priority.

# KOMATSU®



[www.komatsuamerica.com](http://www.komatsuamerica.com)



# ***MAKING POWERFUL CONNECTIONS***

Power Equipment Company connects you with Atlas Copco hydraulic breakers—with high power-to-weight ratio for your hardest jobs and fewer parts for easy maintenance.

*Sustainable Productivity*

***Atlas Copco***

**POWER**  
EQUIPMENT

[www.powerequipco.com](http://www.powerequipco.com)

**KNOXVILLE, TN**

3300 Alcoa Hwy  
(865) 577-5563

1-(800) 873-0961 (TN)

**CHATTANOOGA, TN**

4295 Bonny Oaks Dr.  
(423) 894-1870

1-(800) 873-0963 (TN)

**NASHVILLE, TN**

1290 Bridgestone Pkwy  
(615) 213-0900

1-(800) 873-0962 (TN)

**MEMPHIS, TN**

3050 Ferrell Park Cove  
(901) 346-9800

1-(800) 873-0965 (TN)

**KINGSPORT, TN**

1487 Rock Spgs. Rd.  
(423) 349-6111

1-(800) 873-0964 (TN)

**TUPELO, MS**

1545 Hwy 45  
(662) 869-0283

1-(800) 873-0967



## TEEING IT UP

### GM says Supply Chain Division's mission is to have the right machine, at the right place, at the right time

**QUESTION:** What makes up Komatsu's Supply Chain Division?

**ANSWER:** We're responsible for coordinating the inventory and logistics of that inventory for all construction, utility and forestry machines in North America, including the machines that come from our overseas factories. The Supply Chain Division is made up of four distinct departments: Import/Export Logistics, Customer Support, Import Planning and Business Analysis. Each has its unique responsibilities, but we all work together to ensure we meet one simple mission: Have the right machine, at the right place, at the right time for the customer. I believe our job is to tee up the ball for our distributors and let them hit it down the fairway.

**QUESTION:** How do you go about achieving your mission?

**ANSWER:** It's a well-orchestrated effort among our departments and our global supply network, which includes our own Komatsu factories and outside vendors that support those factories. We have a very close relationship with our sales, marketing administration and product marketing groups, so we know what's on the horizon in terms of model transitions and new products. That helps us formulate a forward-looking forecast and plan for having proper inventory levels to ensure we have the right number of machines on hand.

**QUESTION:** So those groups give you an idea of what's coming down the pike, and you procure the materials in order to build the machinery?

**ANSWER:** Correct, and we're focused on three things as we do that: quality, delivery and cost. From the start, Komatsu builds quality into its

*Continued . . .*



**Bill Chimley, Komatsu General Manager, Supply Chain Division**

*This is one of a series of articles based on interviews with key people at Komatsu discussing the company's commitment to its customers in the construction and mining industries — and their visions for the future.*

This year marks a decade since Bill Chimley joined Komatsu America as a District Sales Manager after spending several years as an instructor with another company. Komatsu moved him into the Supply Chain Division as Manager of Customer Support a few years ago, and it named him General Manager for the entire division in July 2013. He oversees the division, which is responsible for ordering and logistics of all construction, utility and forestry machines in North America.

"From customers' standpoints, the Supply Chain Division is basically an unsung hero," said Chimley. "Customers have jobs to do, and they need machinery to get it done. It's our job to make sure it's readily available when they need it. If we're doing our job, it's a seamless process, and we remain in the background unnoticed. It sounds strange, but that's our goal."

Chimley points out that Komatsu intentionally located the Supply Chain Division at its Chattanooga Manufacturing Operation (CMO) where construction-sized excavators and forestry machines are built.

"It offers us greater understanding of what it takes to deliver a machine, from taking the order to delivering it to the distributor," said Chimley. "We can talk directly with the factory's planning group, and having that one-on-one communication at any time is immeasurable. It gives us insight into the other factories we deal with as well, so there's a real benefit for us to understand the processes and the impact we have on each other."

Bill has been around equipment all his life. His grandfather owned a tractor dealership, and after he graduated from the University of Tennessee, he owned a landscaping business that he later sold. He enjoys landscaping his own yard, as well as hiking in the mountains around Chattanooga and spending time with his wife and two daughters.

# Supply Chain Division focused on quality, delivery, cost

... continued

machinery, by making its own components that work in harmony for great efficiency and durability. From the Supply Chain Division standpoint, our goal is to have inventory available that's not too aged and, therefore, potentially subject to quality issues.

Delivery goes back to having machines where they need to be at the exact time customers want to buy them. We can do that by communicating with our dealers, customers and Komatsu personnel, as well as using data from KOMTRAX to track machine usage. That

communication and data help us know where to put resources in order to ensure inventory is available.

Cost means we optimize efficiency, and in doing so, we pass those savings along to customers. For example, as Komatsu develops a new model, we talk with our factories about what we expect so they have time to procure the components to build that machine. Proper lead time typically helps them do that at lower cost. We also try to find the most-efficient and cost-effective way to ship without sacrificing our ability to have equipment where it needs to be when it needs to be there.

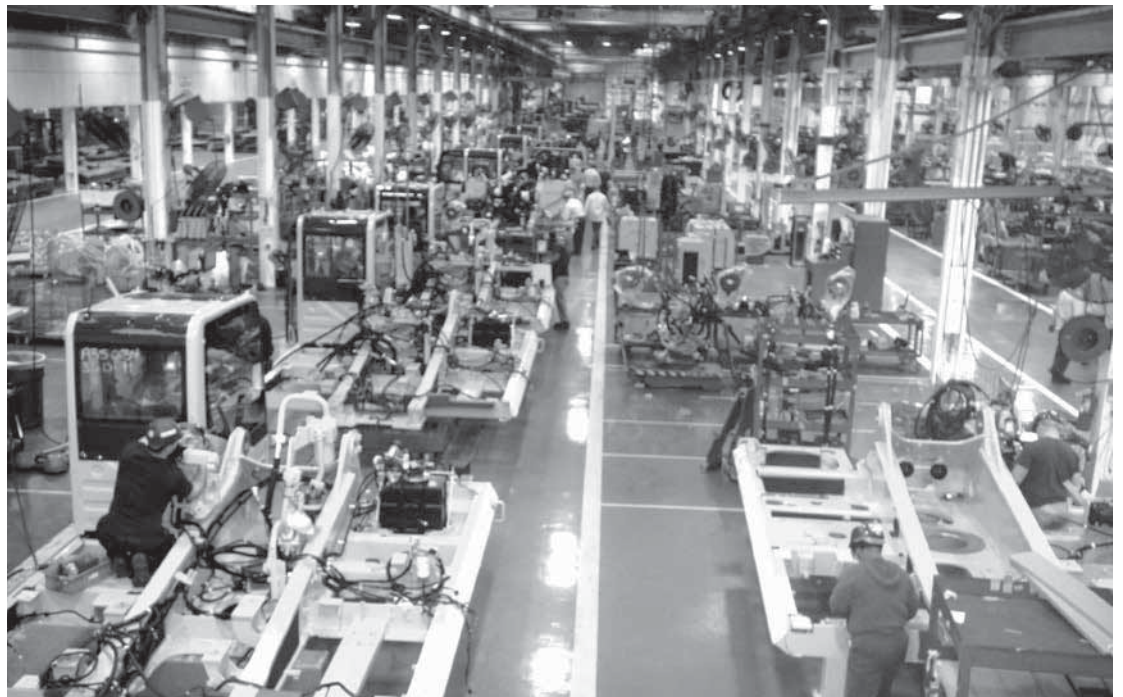
**QUESTION: How do markets affect what you do?**

**ANSWER:** The energy market is strong in North America right now, and housing continues to strengthen. We hope for solid highway and infrastructure bills, which will put those areas back on track too. With that in mind, we look to adjust inventories to meet those needs. For instance, with a strong energy market comes the need for specialized machines, such as our Pipeline Spec. excavators. So, we take that into account, along with our other information, and use it to ensure our distributor inventories are ready to fulfill customers' requests. ■



Komatsu's Supply Chain Division's role includes ensuring proper inventory levels for its distributors so that customers have "the right machine, at the right place, at the right time," said Bill Chimley, Komatsu General Manager, Supply Chain Division.

Bill Chimley, Komatsu General Manager, Supply Chain Division, said his division communicates with other Komatsu divisions, customers and distributors, as well as looks at market trends, to make certain manufacturing operations have what they need to build new machinery for the North American market.





# TAKEUCHI

*Those in the know, know Takeuchi*



A world leader in the manufacturing and service of compact construction equipment, including track loaders, wheel loaders, skid steers, conventional excavators and zero swing excavators is now available at...

# POWER

**EQUIPMENT**

Visit the following  
**Power Equipment** locations to  
find out more about **Takeuchi**:

#### **KNOXVILLE**

3300 Alcoa Highway  
Knoxville, TN  
865.577.5563  
800.873.0961

#### **TUPELO**

1545 Highway 45  
Saltillo, MS  
662.869.0283  
800.873.0967

#### **CHATTANOOGA**

4295 Bonny Oaks Drive  
Chattanooga, TN  
423.894.1870  
800.873.0963

**You name it - we sell, service and rent it!**



[www.powerequipco.com](http://www.powerequipco.com)



# LeeBoy



## 8515C Paver

- 85 hp Kubota or Cummins Tier 4i Engine
- 8-15' Heated, Vibrating Legend Screed System
- LeeBoy's Under Auger Cut Offs
- High or Low Deck Configuration
- Dual Operator Stations

endless  
**PAVEMENT**  
solutions.

**LeeBoy**

**ROSCO**

A LeeBoy Company



**POWER**  
EQUIPMENT

[www.powerequipco.com](http://www.powerequipco.com)

KNOXVILLE, TN  
3300 Alcoa Hwy  
(865) 577-5563  
1-(800) 873-0961 (TN)

CHATTANOOGA, TN  
4295 Bonny Oaks Dr.  
(423) 894-1870  
1-(800) 873-0963 (TN)

NASHVILLE, TN  
1290 Bridgestone Pkwy  
(615) 213-0900  
1-(800) 873-0962 (TN)

MEMPHIS, TN  
3050 Ferrell Park Cove  
(901) 346-9800  
1-(800) 873-0965 (TN)

KINGSPORT, TN  
1487 Rock Spgs. Rd.  
(423) 349-6111  
1-(800) 873-0964 (TN)

TUPELO, MS  
1545 Hwy 45  
(662) 869-0283  
1-(800) 873-0967



## NEWS & NOTES

# Michael Brennan named President/COO for Bramco Inc., parent company of Power Equipment

Bramco Inc., the parent company of Power Equipment Company, Brandeis Machinery & Supply Company, Bramco-MPS, Certified Rental and Total Positioning Solutions, has a new President and Chief Operating Officer. Michael D. Brennan has succeeded Charles Leis as President. Leis remains Bramco's Vice Chairman and Chief Executive Officer.

Brennan joined Bramco in 1995 from the accounting firm Ernst & Young, where he worked in the Louisville office and internationally. In 2001, he was appointed as Bramco's Executive Vice President. He was named COO in 2013.

Brennan is a Certified Public Accountant and serves on the Board of Directors of Bramco Inc., Associated Equipment Distributors and Trinity High School Foundation. He is a member of the American Institute of CPAs, the Kentucky Society of CPAs and a graduate of Bellarmine University in Louisville.

Bramco is now in its 107th year of operation. As President and COO, Brennan will be responsible for operations of all Bramco companies, with the charge to see them through another generation of success and prosperity. ■



Michael D. Brennan,  
Bramco President/COO

## Don't just take our word for it...

"Paladin attachments have the **durability** and performance I can always count on."

*Jim W., Pipeline Contractor*

"My Paladin attachment allows me to gain **versatility** on the jobsite and enhance my machine's capability."

*John B., Forestry Management*

"When relying on **cost** effective solutions, Paladin attachments are my solution."

*Steve H., Equipment Dealer*

"I don't get anything less than maximum **performance** from my Paladin attachments."

*Eric J., Landscape Contractor*



**PALADIN**  
POWERFUL ATTACHMENT TOOLS

The Power of Combined Excellence®

BRADCO

CP

CUSTOMWORKS

FFC

HARLEY

J:B

MCMILLEN

SWEEPSTER



Connect with Paladin:



[www.paladinattachments.com](http://www.paladinattachments.com)

Division of  
**IES** INTERNATIONAL  
EQUIPMENT  
SOLUTIONS

## MORE INDUSTRY NEWS

### AGC conducting work-zone safety classes throughout 2015

The Associated General Contractors of America (AGC) will conduct highway work-zone safety-training classes designed to prevent injuries among highway, street and bridge construction workers. AGC will conduct the classes at eight locations throughout 2015.

“No amount of safety gear will protect workers if they get hit by speeding vehicles,” said Stephen E. Sandherr, CEO. “The best

defense from crashes is teaching crews how to set up and operate safer work zones.”

According to the latest federal safety data, 962 workers were killed at road-construction sites from 2003 to 2010. An AGC survey conducted last spring found that 45 percent of contractors had vehicles crash into their work zones during the past year, and that workers were injured in 20 percent and killed in 6 percent of those crashes. ■

### More products, demonstration chances at ICUEE

ICUEE-The Demo Expo 2015 will offer attendees more product demonstration opportunities and added products to see, plus new navigation and transportation features to enhance the show experience. ICUEE will be held September 29 to October 1, 2015, at the Kentucky Exposition Center in Louisville. It is expected to be the

largest ever in terms of number of exhibitors and products on display.

“Besides the test-drives, one of the best things about ICUEE, attendees tell us, is the sheer number of suppliers and new products, with 850-plus exhibitors and an exhibit footprint of 20 football fields,” said Show Director Sara Truesdale Mooney.

### GAO report breaks down states' construction spending

The Government Accountability Office (GAO) reported that states used about 6 percent of the contract authority received on construction projects to build new roads and bridges in fiscal year 2013. The November 10, 2014, report said that another 15 percent went to new capacity, such as adding lanes to existing highways and bridges.

Engineering, right-of-way acquisition, planning and utilities took up about 8.5 percent, and 6.5 percent went to safety projects, while 2.5 percent was used for state or local debt service. The remaining funds were used for upkeep, research, environmental work and other areas.

### Komatsu recognized for sustainability

The Dow Jones Sustainability World Indices (DJSI) selected Komatsu for the second consecutive year. Companies are evaluated and chosen based on

performance, environmental conservation efforts and social activities. Komatsu was one of 319 companies named to the list out of 2,500 surveyed by the DJSI. ■



# CERTIFIED RENTAL<sup>®</sup>

A Division of **POWER**  
EQUIPMENT

**First time renter?**

Call today to receive a

20% discount\*

800.997.7530

\* Offer applies to one machine for up to a one-year term.

## Why CERTIFIED RENTAL<sup>®</sup>

**CERTIFIED RENTAL<sup>®</sup>**, a division of Power Equipment Company, is a provider of short- or long-term rent-to-rent construction equipment. Our customers can depend on **CERTIFIED RENTAL<sup>®</sup>** because we provide the following benefits:

**C**OMMITMENT - WE ARE COMMITTED TO PROVIDING OUR CUSTOMERS WITH THE BEST VALUE FOR THEIR MONEY, OUTSTANDING CUSTOMER SERVICE AND PRODUCTS THEY CAN RELY ON.

**E**FFICIENT - OUR FLEET INCLUDES ONLY LATE MODEL EQUIPMENT. OUR CUSTOMERS ARE ABLE TO RENT MACHINES WITH THE MOST EFFICIENT TECHNOLOGY THAT ENHANCES OPERATION, GIVES THEM THE COMPETITIVE EDGE AND REDUCES DOWNTIME.

**R**ESOURCES - WE ARE A 107 YEAR OLD FAMILY BUSINESS THAT HAS THE RESOURCES TO PROVIDE AVAILABILITY OF EQUIPMENT AS WELL AS THE SERVICE REQUIRED TO SUPPORT THE EQUIPMENT.

**T**RUE COST OF RENTING - WE PROVIDE THE MOST HASSLE-FREE, ECONOMICAL AND SAFE ALTERNATIVE TO OWNING AND PROVIDE OUR CUSTOMERS WITH RENTAL OPTIMIZATION INITIATIVE REPORTS SO THEY CAN SEE THE "TRUE COST" OF RENTING.

**I**MAGE ENHANCEMENT - WE OFFER CLEAN, WELL-MAINTAINED, LOW-HOUR MACHINES.

**F**ACTORY TRAINED TECHNICIANS - OUR TECHNICIANS RECEIVE THE MOST UP-TO-DATE DIAGNOSTIC SKILLS TO REDUCE THE DOWN-TIME OF THE EQUIPMENT WE RENT.

**I**NCREASED AVAILABILITY - WITH A RENTAL FLEET IN EXCESS OF 500 MACHINES, A RENTAL MACHINE INVESTMENT OF OVER 80M, AND A FOUR-STATE BRANCH NETWORK, OUR CUSTOMERS' DIVERSE APPLICATION NEEDS CAN BE MET.

**E**CONOMICAL - OUR KOMATSU EQUIPMENT HAS SHOWN TIME AND TIME AGAIN TO BE A PRODUCTIVE AND FUEL EFFICIENT BRAND NAME.

**D**OWNTIME - IS KEPT TO A MINIMUM BECAUSE IT IS MONITORED IN REAL-TIME USING KOMTRAX TELEMETRICS FOR USAGE, FUEL CONSUMPTION, IDLE TIME AND MALFUNCTIONS.



**KOMATSU Excavators:  
PC35 - PC1250**

Select units available with Atlas Copco or Tramac hammers. Also select units available with thumbs

**HAMM 3307 and 3410  
Single Drum Vibratory Soil  
Compactors**



Also available HAMM  
Double Drum  
Vibratory Asphalt Rollers



**KOMATSU  
HM300 and HM400  
Articulated Trucks**



**KOMATSU  
D37EX - D155AX w/Cab  
Dozers**  
Ripper Units Available on D6SEX and D155AX  
GPS Available on Select Models



**KOMATSU  
WA200 - WA500  
WHEEL LOADERS**

Forks Available on WA200 thru WA320

OTHER UNITS IN OUR CERTIFIED RENTAL FLEET INCLUDE: BACKHOE LOADERS, SKIDSTEER LOADERS, TRACTOR/SCRAPERS, CRAWLER LOADERS AND MILLING MACHINES. PLEASE CONTACT YOUR LOCAL POWER EQUIPMENT LOCATION LISTED BELOW FOR MORE DETAILS.

## CERTIFIED RENTAL<sup>®</sup>



A Division of Power Equipment

[www.certifiedrental.com](http://www.certifiedrental.com)

**KNOXVILLE**  
865.577.5563  
800.873.0961

**NASHVILLE**  
615.213.0900  
800.873.0962

**CHATTANOOGA**  
423.894.1870  
800.873.0963

**KINGSPORT**  
423.349.6111  
800.873.0964

**MEMPHIS**  
901.346.9800  
800.873.0965

**SALTILLO, MS**  
662.869.0283  
800.873.0967

# SIDE TRACKS

## On the light side



"Tell me what LOL means, and I'll tell you what IPO means."

"They tell me that you're really going all out for our safety program."



## Brain Teasers

Unscramble the letters to reveal some common construction-related words. Answers can be found in the online edition of the magazine at [www.PowerEquipment.com](http://www.PowerEquipment.com)

1. L E P I \_ \_ \_ \_ \_
2. E R S W E \_ \_ \_ W \_ \_ \_
3. D A G R E R \_ \_ R \_ \_ \_ \_ R
4. G I H N R O S \_ S \_ \_ \_ \_ \_ G
5. Y T A P I C A C \_ \_ \_ P \_ C \_ \_ \_ \_

## Did you know...

- Zero is the only number that cannot be represented by Roman numerals.
- Kites were used in the American Civil War to deliver letters and newspapers.
- Drinking water after a meal reduces the acid in your mouth by 61 percent.
- Intelligent people have more zinc and copper in their hair.
- A comet's tail always points away from the sun.
- If you stop getting thirsty, you need to drink more water. When a human body is dehydrated, its thirst mechanism shuts off.
- Strawberries are the only fruit whose seeds grow on the outside.
- The moon moves about 2 inches away from the Earth each year.
- Gold is the only metal that doesn't rust, even if it's buried in the ground for thousands of years.



| Equip #                     | Year | Make/Model          | Description        | Serial No.  | Hours  |
|-----------------------------|------|---------------------|--------------------|-------------|--------|
| <b>DOZERS</b>               |      |                     |                    |             |        |
| J00173                      | 2007 | Komatsu D31PX-21    |                    | 51218       | 2,025  |
| J00191                      | 2013 | Komatsu D31PX-22    |                    | 60925       | 14     |
| J00179                      | 2013 | Komatsu D61PX-23    |                    | 30405       | 1,496  |
| J00194                      | 2007 | Komatsu D65EX-15    |                    | 69935       | 2,614  |
| J00178                      | 2013 | Komatsu D65WX-17    |                    | 1131        | 964    |
| PT18226-1                   | 2001 | Komatsu D65EX-12    | with canopy        | 63659       | 6,797  |
| <b>EXCAVATORS</b>           |      |                     |                    |             |        |
| J00072Z                     | 2005 | Komatsu PC220       | arm                | 65605A      | 0      |
| J00110                      | 2012 | Komatsu PC360LC-1   |                    | A32114      | 1,244  |
| J00184                      | 2012 | Komatsu PC360LC-1   |                    | A32284      | 1,970  |
| PTB0638-1                   | 2003 | Komatsu PC270LC-7L  |                    | A86032      | 7,200  |
| PT19685-1                   | 2004 | Komatsu PC308USLC-3 |                    | 20077       | 12,500 |
| PT26558-1                   | 2013 | Komatsu PC490LC-10  |                    | A40407      | 0      |
| PTC0291-2                   | 2002 | Komatsu PC210LC-6   |                    | K34898      | 7,933  |
| <b>WHEEL LOADER</b>         |      |                     |                    |             |        |
| J00165                      | 2013 | Komatsu WA200-6     |                    | 72012       | 3,229  |
| J00193                      | 2006 | Komatsu WA200-PT    |                    | 68283       | 2,668  |
| J00175                      | 2011 | Komatsu WA250-6     |                    | 75934       | 1,437  |
| J00181                      | 2014 | Komatsu WA320-7     |                    | 80314       | 215    |
| J00182                      | 2014 | Komatsu WA320-7     |                    | 80319       | 311    |
| PTC0535-1                   | 2007 | Komatsu WA320-5L    |                    | A33136      | 6,818  |
| PP26116-1                   | 2012 | Komatsu WA320-6     | with cab and air   | A35301      | 6,557  |
| PP26507-1                   | 2013 | Komatsu WA320PZ-6   | with cab and air   | 71442       | 0      |
| <b>SKID STEER LOADER</b>    |      |                     |                    |             |        |
| J00156                      | 2008 | Komatsu SK1026      |                    | A80401      | 1,198  |
| <b>TRUCKS (ARTICULATED)</b> |      |                     |                    |             |        |
| J00186                      | 2007 | Komatsu HM300-2     |                    | A11086      | 6,547  |
| J00188                      | 2004 | Komatsu HM400-1     |                    | 1117        | 6,551  |
| <b>FORESTRY EQUIPMENT</b>   |      |                     |                    |             |        |
| PP26946                     | 2005 | Pitts KB45          | delimber trailer   | P050300     | 7,942  |
| PT27499                     | 2005 | Barko 495ML         | knuckleboom loader | 10523582    | 8,984  |
| PT22498-2                   | 2000 | Prentice 410E       | log loader         | P57393      | 9,791  |
| PT26703                     |      | John Deere 753G     | harvester          | GX002052    | 5,414  |
| PT20751-1                   | 2005 | Komatsu 425EXL      | feller buncher     | AT4C-2603   | 3,478  |
| PT23086-1                   | 2007 | Komatsu 445EXL      | feller buncher     | FT4C-2867   | 7,774  |
| PT27239                     |      | Dynamic 565         | chipper            | 565-5032    | 1,341  |
| PT26873                     | 2004 | Timber King TK540DS | knuckleboom loader | PR59695     | 9,980  |
| PP27416                     | 2007 | Prentice 2670       | feller buncher     | PB19353     | 7,915  |
| PT27240                     | 2002 | Deliminator         |                    | JD10155     | 6,408  |
| <b>PAVING/COMPACTION</b>    |      |                     |                    |             |        |
| J00176                      | 2006 | Hamm 3410           | roller             | H1690681    | 3,685  |
| PP27468                     | 1998 | Blaw Knox PF3172    | paver              | 317226-12   | 4,734  |
| PP27469                     | 1996 | Blaw Knox PF3180    | paver              | 318002-06   | 6,192  |
| <b>PAVING/COMPACTION</b>    |      |                     |                    |             |        |
| PT27881                     |      | Tramac V45          | hydraulic hammer   | 112384      | 0      |
| PT22862-1                   | 2006 | Tramac V700         | hydraulic hammer   | 167334      | 0      |
| PT27241                     |      | TB975X              | hydraulic hammer   | 970915E8098 | 0      |

Availability is subject to prior sales • Financing available – call for details!

Change Service Requested

# POWER EQUIPMENT

The Products. The People. The Service



www.powerequipco.com



D61-PXi  
D61-EXi



World's FIRST  
dozer with fully  
automatic blade  
control

## KOMATSU

- Excavators
- Crawler Dozers
- Wheel Loaders
- Articulated Trucks
- Rigid Frame Trucks
- Motor Graders
- Mini Excavators
- Shovels

### Paving, Milling and Rollers



### Construction and Forestry Attachments



### Forestry and Land Clearing



### Cranes and Material Handlers



### Concrete, Crushing and Screening



### Tractors and Pull Pans



### Compact Construction Equipment



|  |  |
|--|--|
| <p><b>KNOXVILLE</b><br/> 3300 Alcoa Highway<br/> Knoxville, TN<br/> 865.577.5563 800.873.0961</p>        | <p><b>NASHVILLE</b><br/> 1290 Bridgestone Parkway<br/> LaVergne, TN<br/> 615.213.0900 800.873.0962</p> |
| <p><b>CHATTANOOGA</b><br/> 4295 Bonny Oaks Drive<br/> Chattanooga, TN<br/> 423.894.1870 800.873.0963</p> | <p><b>KINGSPORT</b><br/> 1487 Rock Springs Road<br/> Kingsport, TN<br/> 423.349.6111 800.873.0964</p>  |
| <p><b>MEMPHIS</b><br/> 3050 Ferrell Park Cove<br/> Memphis, TN<br/> 901.346.9800 800.873.0965</p>        | <p><b>TUPELO</b><br/> 1545 Highway 45<br/> Saltville, MS<br/> 662.869.0283 800.873.0967</p>            |

# CERTIFIED RENTAL

www.certifiedrental.com

800.997.7530

