

# POWER

# EQUIPMENTS

**KOMATSU**



A publication for and about Power Equipment Company's customers • [www.PowerEquipteeter.com](http://www.PowerEquipteeter.com) • Issue 2, 2024



**Charles Harris  
Construction Inc.**



**Panther Creek  
Forestry LLC**





Andy Moon

### A message from Power Equipment Company



Dear Valued Customer:

I hope 2024 is off to a great start for you. The forecast looks promising across most sectors of the construction industry, and my hope is that your year is filled with numerous projects.

Having productive equipment that can deliver with minimal downtime is essential to your ability to get projects done on time and on budget. In this issue, there is an article about three Komatsu excavators that were named among the top new products of 2023. Included is the PC490LCi-11 Intelligent Machine Control (IMC) excavator that helps operators dig straight to grade without overcutting and wasting time and material. You can also read about the smaller but mighty PC130LC-11 and the larger PC900LC-11. Find out how they can fit into your fleet.

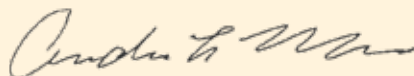
No matter your machinery or fleet size, My Komatsu can help you manage it better. Now even easier to navigate, My Komatsu lets you get the critical information you need in fewer clicks. You can also see manuals and order parts, including Reman items that could potentially provide you with significant savings.

Additionally, you can access Komatsu's Smart Construction solutions through your My Komatsu account. Smart Construction solutions can help you maximize productivity and efficiency, and you can incorporate them at practically any stage of the construction process, from pre-bid to production to final closure. Be sure to check out the article on how to choose the best solution for your business.

There are several other articles that I believe you will find valuable as you work on projects now and look to the future.

As always, if there is anything we can do for you, please feel free to contact one of our branch locations covering Tennessee, Arkansas, and parts of Virginia and Mississippi.

Sincerely,  
Power Equipment Company



Andy Moon,  
President

## In this issue

### Panther Creek Forestry LLC pg. 4

See how this company provides sustainable forest management practices in Tennessee.

### Charles Harris Construction Inc. pg. 8

Meet Charles Harris, whose Arkansas-based business offers agricultural and drainage work for local farmers.

### Construction Outlook pg. 12

Discover what's in store for 2024.

### Choosing the Right Fit pg. 14

Figure out which Smart Construction solution is right for you.

### New Milling Machine pg. 18

Take a look at the new WIRTGEN W 150 Fi compact milling machine.

### Product Spotlight pg. 21

Check out Komatsu's new GD955-7 motor grader, which is designed to build and maintain haul roads for truck fleets of 100 tons and up.

### Filling a Demand pg. 23

Get a glimpse of the new LeeBoy 8680 asphalt paver.

### Optimized Experience pg. 25

Learn about My Komatsu's new features and updates.

### Top Honors pg. 28

Find out which Komatsu excavators were featured on a list of top new products.

### Boosting Operational Effectiveness pg. 30

Read about the Bramco-MPS merger.



**THE POWER TO  
PERFORM**

www.PowerEquipCo.com

An equal opportunity, affirmative action employer



Published for Power Equipment Company.

© 2024 Construction Publications Inc. Printed in the USA.

## Leadership Team

**Andy Moon,**  
President

**Shawn Robins,**  
Vice President,  
Product Support

**Tim Hancock,**  
General Manager,  
Credit & Finance

**Mike Luster,**  
Vice President,  
Regional Sales Manager  
(Nashville)

**Darryl Thompson,**  
Vice President,  
Regional Sales Manager  
(Memphis, Tupelo, Little Rock)

**Justin Kiser,**  
Regional Sales Manager  
(Knoxville, Kingsport, Chattanooga)

**Tim Hooper,**  
Regional Branch Manager,  
Northwest Arkansas

**Brian Bourne,**  
Sales Manager,  
Central and South Arkansas

**Aaron Kiser,**  
Corporate Rental Sales Manager

**Steve Woodby,**  
Corporate Sales Administration  
and Inventory Manager

**Kyle Rogers,**  
Marketing Manager

**Jami Frank,**  
Marketing Coordinator

### Chattanooga, TN

4295 Bonny Oaks Drive  
(423) 894-1870  
(800) 873-0963

### Kingsport, TN

1487 Rock Springs Road  
(423) 349-6111  
(800) 873-0964

### Knoxville, TN

3300 Dozer Lane  
(865) 577-5563  
(800) 873-0961

### Memphis, TN

3050 Ferrell Park Cove  
(901) 346-9800  
(800) 873-0965

### Nashville (La Vergne), TN

320 Waldron Drive  
(615) 213-0900  
(800) 873-0962  
Drill Sales: (615) 641-3000

### Tupelo (Saltillo), MS

1545 Highway 45  
(662) 869-0283  
(800) 873-0967

### Little Rock, AR

2801 W. 65th Street  
(501) 823-4400

### Springdale, AR

781 E. Randall Wobbe Lane  
(479) 927-1672

## Panther Creek Forestry LLC provides sustainable forest management practices in Tennessee



**Ben Myers,**  
Owner



**Emily Stefanick,**  
Conservation  
Project Manager



**Emmett Kunz,**  
Field Forester

Nestled within the lush landscapes of Tennessee, Panther Creek Forestry LLC has carved a niche for itself as a sustainable forest management firm and a champion of land stewardship. Established in 2002 by Ben Myers, the McMinnville-based company has grown dramatically from its early days primarily managing projects into a comprehensive operation with a steadfast dedication to the conservation of family-owned farm and forest lands. This dedication is rooted in Myers' personal connection to the land, cultivated from a lifetime of experience and a passion for ecological and financial sustainability.

"My experience growing up on family forest land sparked an interest in forest management," Myers shared, noting that he named his company after the creek that runs through his family's property. "This personal connection drives my commitment to managing properties in a way that aligns with both my and our clients' objectives, ensuring that every piece of land we touch is nurtured toward its fullest potential."

"Initially, Panther Creek Forestry was all about consulting, but as we dove deeper into the work, especially with federal and state partners, we realized the necessity of expanding our capabilities," said Conservation Project Manager Emily Stefanick. "Now, with a team equipped with the latest in forestry technology and a wide range of specialists, we're not

just consultants; we're implementers of comprehensive forest management strategies."

Panther Creek Forestry's multifaceted approach to forest management encompasses everything from reforestation efforts to the strategic management of timber products. Panther Creek Forestry strives to serve landowners with unmatched expertise and care.

"Many of the properties we manage today began as cleared fields with only baby pine trees," Myers reflected. "Now, they've grown up into trees that have post products in them. Our desire is to foster healthy environments, so they can grow into tall, straight trees and provide services for the ecosystem and financially for the landowner."

Central to Panther Creek Forestry's mission is the economic aspect of land management, which is crucial for the sustainability of forest lands, according to Myers.

"Effective management is not just about conservation; it's about economic viability," explained Myers. "It's about ensuring that the land doesn't just sit there but is actively contributing to the landowner's financial stability through well-managed timber products."

This balance between conservation and profitability is what sets Panther Creek Forestry apart. Serving a wide array of clients, typically those with 10 to 500 acres, Panther Creek Forestry prides itself on its ability to tailor its services to the unique goals of each landowner. The company's reach, which primarily spans the area between I-65 and I-75, from Kentucky to Alabama, underscores its significant impact on the Cumberland Plateau-Highland Rim region's landscape and its dedication to the community it serves.

### Sustainable practices

Panther Creek Forestry is currently working to balance the ecological growth and economic return on a multi-acre plantation.

"We're currently in the first thinning of a stand we harvested 15 years ago, aiming to reduce basal area and remove smaller, undesirable trees to allow the larger, more desirable trees to flourish," explained Myers. "This selective process is crucial for the healthy development

Panther Creek Forestry's fleet of equipment includes a Komatsu XT445L-5 tracked feller buncher equipped with a Quadco attachment.







▶ VIDEO

An operator uses a Komatsu PC238USLC excavator equipped with a Log Max 5000 harvesting head to cut timber to specific lengths.

of our forests, ensuring they continue to thrive economically and ecologically.”

To properly manage and access the land, Panther Creek Forestry relies on a set of unique machines, including a Komatsu PC238USLC excavator equipped with a Log Max 5000 harvesting head, a Komatsu XT445L-5 tracked feller buncher, a Komatsu D39EX dozer, and a Komatsu PC138USLC excavator.

“These machines are essential for adding value to the forest by targeting small saw timber products and specialized post or pallet products,” elaborated Myers. “The PC238USLC is pivotal for our first thinning projects. It’s designed to selectively harvest smaller trees while preserving the larger, more valuable ones, ensuring the forest’s long-term health and productivity. The XT445L-5, with its larger footprint, allows us to accommodate bigger timber, balancing ease of movement with selective harvesting. The D39EX dozer is a smaller machine, so it’s able to ease around these hillsides and put in our fire lines for a prescribed fire. The PC138 is a very versatile machine and can be equipped with a bucket or a mulching head, which allows us to manage unwanted growth and invasive species.”

Myers continued, “In our work, finding a balance in the forest is key. We aim to thin an overstocked forest to a well-stocked one, creating an environment where trees and wildlife can prosper. Having the right equipment allows

us to find the balance and access locations that larger machines can’t penetrate, while being able to handle larger products that smaller machines couldn’t process.”

Panther Creek Forestry’s mission extends beyond the immediate task at hand, focusing on fostering enduring relationships with landowners to ensure continuous, sustainable management of their forests.

“Our goal is to be there every three to five years, maintaining that well-managed forest, which is only possible through the relationships we build and the technology we employ,” explained Myers.

### Power Equipment provides necessary expertise

Since expanding from project management to land management, Panther Creek Forestry has built a pivotal relationship with its equipment distributor, Power Equipment Company, and relies on Territory Manager Corey Shumpert to find the right equipment and attachments for its operations. This partnership, rooted in support and mutual respect, enables Panther Creek Forestry to maintain the high standards of service and sustainability the company is known for.

“One of the main attributes to working with Power Equipment is the service,” declared Myers. “I’m able to pick up the phone at 9:00 at night or 6:00 in the morning, and somebody will answer and say, ‘Hey Ben, what do you need?’



Discover more at  
[PowerEquipment.com](https://www.PowerEquipment.com)

*Continued...*



# 'Our goal is to manage forests effectively'

... continued

We're also able to order the part we need and get it delivered to the site, or we're able to pick it up at one of Power Equipment's several locations, which is helpful. If we need help with something we can't handle on our own, like the specialized electronics in our equipment, their technicians will come out and help us solve the problem."

Myers also highlights the value of Komatsu's financing options, a critical aspect of his relationship with Power Equipment.

"We're able to acquire these machines at reasonable rates so that we can continue providing good services for our customers as well," Myers stated.

## Long-term plan

Moving forward, Panther Creek Forestry aims to enhance its staff and maintain the delicate balance of forest management across Tennessee.

"It's about creating a stable workforce that understands the nuances of forestry, ensuring that every decision made today positively impacts the forest's future," explained Myers. "Our goal is to manage forests effectively, avoiding the pitfalls that can compromise their health decades down the line."

Stefanick added, "As urban areas expand, we're focused on ensuring our forests can compete with the development value of the land, keeping forest land as forest land."

By bolstering its workforce with knowledgeable professionals and leveraging the support of partners like Power Equipment, Panther Creek Forestry is poised to navigate the complexities of sustainable forest management, ensuring that forests remain a vibrant part of Tennessee's landscape for generations to come. ■

*\*The opinions expressed here are from the end user as quoted. The results described herein are those of these end users under certain conditions. Individual results may vary.*



(L-R) Power Equipment's Corey Shumpert supports Panther Creek Forestry's team, including Caleb Bratcher, Emmett Kunz, Ashley Newman, Ben Myers, Meredith Galligan, and Emily Stefanick.

Panther Creek Forestry is able to access tight areas with its Komatsu PC138USLC excavator.





**POWER**  
EQUIPMENT

Sales  
Parts  
Service  
Rentals

Call  
Power  
Equipment  
for more  
information.

Chattanooga, TN  
(423) 894-1870

Kingsport, TN  
(423) 349-6111

Knoxville, TN  
(865) 577-5563

Memphis, TN  
(901) 346-9800

Nashville, TN  
(Komatsu Only)  
(615) 213-0900

Tupelo, MS  
(662) 869-0283

Little Rock, AR  
(501) 823-4400

Springdale, AR  
(479) 927-1672

PowerEquipCo.com

# The power to improve productivity



## Charles Harris Construction Inc. surpasses 40 years of levy and ditch work for local farmers



**Charles Harris,**  
Owner

In Barton, Ark., Charles Harris Construction Inc. has provided pivotal agricultural and drainage work for local farmers over the past four decades. Founded and led by Charles Harris, the four-man operation specializes in enhancing the area's farming capabilities.

"I started out installing water lines and sewer lines," recalled Charles. "Sometime years ago, I began to do some farm ditching, which made life a lot simpler, so that's what I've done for the last 35 to 40 years."

John Harris, Charles' son, is an owner and an operator. He was raised around heavy equipment and farming, so there was never much doubt in his mind which career path he would pursue.

"I went off to college, but I knew that coming home and working with my dad was what I wanted to do," noted John. "I realized that being outside in nature every day was important to me, and I have the opportunity to experience that every day here. Plus, every job is different. You're not doing the same repetitive work every single day."

Charles Harris Construction focuses on serving the surrounding areas of Phillips

and Monroe counties, ensuring that each project contributes to the betterment of the community.

"We take some property that is distressed or could use some work and improve its productivity," explained Charles. "That's what I enjoy about this work — making something better than what was originally there. We take a lot of pride in what we do, which has kept us busy and our clients happy since I started the business."

"We have the best customers you could ever imagine," declared John. "I grew up with a lot of them and have built strong relationships over the years."

### Levy expansion job

Currently, Charles Harris Construction is expanding a levy on a local farm.

"Twenty years ago, I farmed the land we're now working on," said Charles. "We originally built the levy 35 years ago. Now, we're enhancing it to benefit the farmers, allowing them to utilize acres of land that were previously too wet for farming. We're making the levy 25 to 30 feet wide to accommodate tractor and bush hog maintenance. It's a complex job given the expansive slope and working conditions, especially with the mud in winter. We're racing against the rain, which slows us down significantly."

To complete the work, Charles Harris Construction's equipment fleet includes multiple Komatsu machines, chosen for their durability and performance.

"I have two Komatsu PC210 excavators, a PC160 excavator, an older PC220 long-reach excavator, and a D41 dozer," said Charles. "Since my first Komatsu purchase around '83 or '84, we've remained loyal to Komatsu. Their service and sales departments take such good care of us, making it hard to consider any other brand."

John added, "The Komatsu excavators have the power and durability we need for our projects. They allow us to do what we need to do efficiently."

The company's dedication to using high-quality equipment like Komatsu is a

With a Komatsu PC210LC-11 excavator, an operator removes material from a bank to widen a levy at a local farm in Arkansas.

### ▶ VIDEO







An operator cuts material out of a ditch to widen a levy at a local Arkansas farm with a Komatsu PC210LC-11 excavator.

testament to its commitment to delivering exceptional work.

"With Komatsu's reliability, we can tackle tough jobs and ensure our projects, like the levy widening, are completed to the highest standards," stated John. "This not only helps us stay efficient but also greatly benefits our farming clients by improving drainage and land usability."

### Long-term distributor relationship

Charles Harris Construction greatly values the support and relationship it has with its distributor, Power Equipment Company. This partnership is crucial for the seamless operation of Charles Harris Construction's projects, ensuring minimal downtime and efficient problem resolution.

"The guys in the service department are excellent," stated Charles. "We rarely need to call them, given the durability of our Komatsu machines. For instance, John's PC210 excavator has been running for two years without needing a mechanic. When we do call them, they immediately know how

to address our issues or get someone to us without delay. They get us going right away. That's why we continue to choose Komatsu and Power Equipment."

John added, "They know us by name, understand our equipment, and are quick to assist. This personalized service makes all the difference. Sparky, Jackie and Ray from Power Equipment have been indispensable to us. Their expertise and willingness to help have been key in keeping our operations smooth. We couldn't ask for better service."

This connection with Power Equipment not only supports Charles Harris Construction's day-to-day operations but also fosters a sense of community and trust.

"Despite being a large company in Memphis, Power Equipment treats us with the same care and recognition as a local business," commented John. "It's reassuring to know they're just a call away, ready to support us."

### Continued success

With a legacy that is deeply rooted in family and a foundation built on trust



Discover more at  
[PowerEquipmenteer.com](https://www.PowerEquipmenteer.com)

*Continued...*



# 'The company will continue to help out our community'

... continued



(L-R) Charles Harris Construction's Greg Roberts, Charles Harris, John Harris, and Kailin Holloway receive support from Power Equipment's Mike Miller.

and exceptional service, Charles Harris Construction is looking toward a future that promises continuity and quality work. Even as Charles nears his 80th birthday, his enthusiasm for his work remains undiminished.

"Running equipment every day is something I still enjoy," Charles commented. "It's hard to retire when you love what you do and still have a passion to do it every day, but I probably will have to retire in a few years, and when I do, John and my grandson will take over. Our other employee, Greg, is a longtime operator that has become an essential part of our team. Once I retire, I know that John's been here long enough to know how to run the operation and take care of our customers. They all like John and his work, so I'm confident he'll do well, and the company will continue to help out our community." ■

*\*The opinions expressed here are from the end user as quoted. The results described herein are those of these end users under certain conditions. Individual results may vary.*

An operator uses a Komatsu PC160LC excavator to dig a trench through muddy conditions.







# CLOCKS IN, NEVER OUT.

There's only one member of your crew that will never quit, complain, ask for breaks or wish the day would end. The TL8R2 track loader just wants to work. For those who value uptime above all, nothing else comes close. In fact, anything else is probably in the shop.

**THE MARK OF TOUGHNESS**



[www.PowerEquipCo.com](http://www.PowerEquipCo.com)

**LITTLE ROCK, AR**  
(501) 823-4400

**SPRINGDALE, AR**  
(479) 927-1672

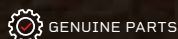
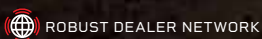
**TUPELO, MS**  
(662) 869-0283  
1-(800) 873-0967

**KNOXVILLE, TN**  
(865) 577-5563  
1-(800) 873-0961

**MEMPHIS, TN**  
(901) 346-9800  
1-(800) 873-0965

**CHATTANOOGA, TN**  
(423) 894-1870  
1-(800) 873-0963

**KINGSPORT, TN**  
(423) 349-6111  
1-(800) 873-0964



»» [DIG IN AT TAKEUCHI-US.COM](http://DIG IN AT TAKEUCHI-US.COM)



# Fed rate pause could have positive effect on housing market in 2024, economists predict overall growth

Late last year, the Federal Reserve indicated it was likely done raising rates in its efforts to bring inflation under control and avoid a recession. Construction forecasters were expecting the news even before it was announced, which led to a primarily optimistic outlook for construction starts in 2024.

According to Dodge Construction Network, overall construction starts are expected to rise 7% this year, following a 1% increase in 2023. That projection would bring total starts to \$1.206 trillion in 2024. Dodge sees all regions of the country making gains, led by the Northeast at 16% and the West at 10%.

"As we go into 2024, we're starting to see economic growth become more consistent and accelerating by the end of the year," said Dodge Chief Economist Richard Branch in the article "2024 Forecast: Non-Building, Manufacturing Lead the Way" by Engineering News-Record.

Branch added that the outlook is dependent on the assumption that the Federal Reserve is done raising interest rates. Dodge expects rates

to begin falling in the middle of 2024, according to the Engineering News-Record article.

A rate increase freeze and expected drop later would bode well for the housing market, according to Dodge and other forecasters. Dodge predicts an overall 11% increase, with a rise of 9% in single-family and 14% in multifamily. ConstructConnect predicts a 4.4% increase in overall residential. The National Association of Home Builders forecasts single-family rising 3.7%.

"As interest rates stabilize and then begin to decline after Q1 or Q2, the homebuilding sector will revive," said Alex Carrick, Chief Economist at ConstructConnect.

### Transportation's continued surge

While overall construction was relatively flat in 2023, the transportation sector, which includes public highway, pavement and street construction, was a standout with double-digit growth that saw it reach \$108.6 billion. The American Road & Transportation Builders Association (ARTBA) expects the trend to

**Potential interest rate cuts in 2024 could spur the housing market, according to construction industry forecasters. Dodge Construction Network sees an overall 11% increase, with a rise of 9% in single-family and 14% in multifamily. The National Association of Home Builders forecasts single-family rising 3.7%.**







The American Road & Transportation Builders Association predicts the total value of overall transportation to grow to \$214 billion, a 14% increase.

continue and increase another 16% in 2024 to nearly \$126 billion, according to Alison Black, Chief Economist at ARTBA.

Black indicated that the rise was influenced by the Infrastructure Investment and Jobs Act (IIJA) because many of the projects supported by IIJA are in the construction phase. Plus, many states are increasing their own revenues to match federal funds and make additional transportation investments, using a combination of general fund transfers, bond issues, business taxes, and other user-fee increases.

Considering IIJA's impact on starts, along with states' increased revenue, ARTBA predicts the total value of overall transportation to grow to \$214 billion, a 14% increase. That includes sectors such as airport construction, bridges, public transit, rail, and ports.

Both Dodge and Fails Management Institute (FMI) have positive outlooks for the non-building sector, which includes transportation. Dodge sees overall growth at 7% with highways and bridges up 23% and environmental public works

rising 10%. It only predicts power plants/gas/communications to fall, dropping 17%.

FMI's outlook is more modest at 7.7% overall with highways and streets at 8.6%, sewer systems at 9.1%, and water supply at 7%. In contrast to Dodge, FMI predicts power will have an increase of 6.2%.

### Sector gains

Manufacturing is expected to see double-digit growth within the overall non-residential market, according to both Dodge and FMI, with Dodge predicting 16% and FMI 15.1%. Both have an overall outlook for non-residential at about 4%.

Dodge predicts as much as 17% growth in the hotels and motels sector, and 9% in stores and shopping centers. It also sees a rise in educational buildings and health care facilities, with drops in office buildings and warehouses. Other non-residential is predicted to be flat.

While FMI predicts office and commercial will fall, it anticipates growth in amusements and recreation, religious, education, health care, and public safety. ■



# Smart Construction solutions can help you increase productivity, track it and make faster critical decisions



**Jason Anetsberger,**  
Director of  
Customer Solutions,  
Komatsu

Technology use in the construction industry has grown rapidly during the past decade and includes both on-machine technology as well as software designed for each stage of project management. Choosing the right technology to move your business forward comes with many questions, and the correct answers depend on what technology your company has already adopted.

Komatsu has long been a technology proponent. It was among the first manufacturers to incorporate telematics into its machinery, with its Komtrax remote monitoring system that enabled customers to monitor fuel usage, idle time, location and more. During the past two decades, Komtrax has expanded to include additional comprehensive information that helps with proactive fleet management, to help reduce downtime as well as owning and operating costs.

"For our customers, Komtrax was a great introductory option down the technology path, and it continues to be a great feature," said Jason Anetsberger, Director of Customer Solutions, Komatsu. "On our new machines, it's easily accessible through our My Komatsu platform and lets you monitor any piece of equipment."

Anetsberger continued, "Now, the question is: what's the next step that is right for you in this technological journey? Fortunately, we have many Smart Construction solutions depending

on where you are at the moment. We offer solutions that can support a small operation that is currently not using any technology, as well as solutions for large multinationals that have fully embraced machine control and project management systems."

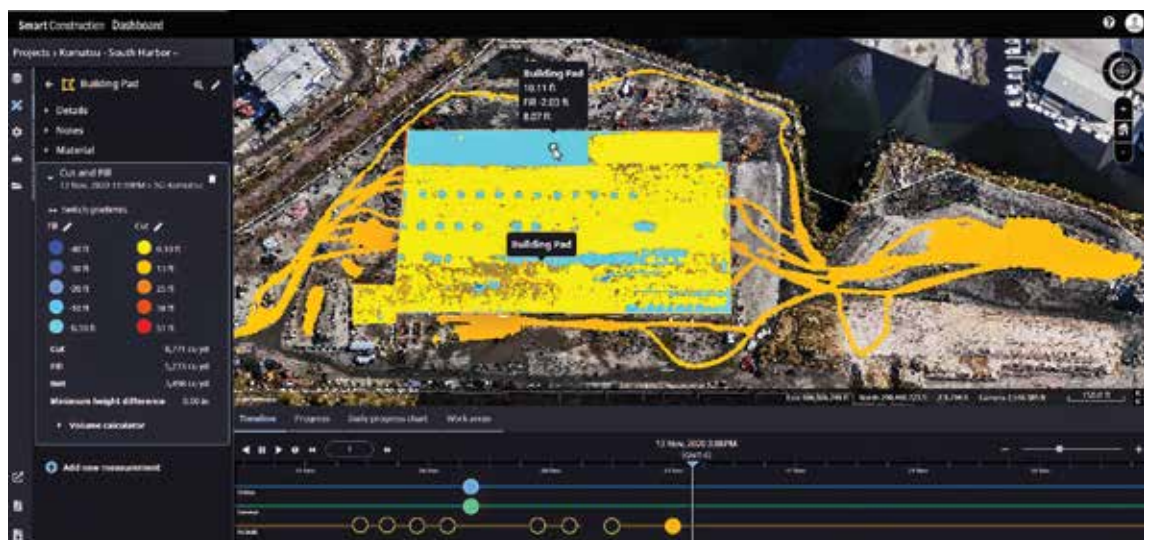
Anetsberger provided some helpful tips for how to determine which Smart Construction solutions could be beneficial and when the right time to add them is. All of the solutions can be accessed and viewed through your My Komatsu account.

### No solutions? IMC is a good introduction

If you are not using any of Komatsu's Smart Construction solutions, Intelligent Machine Control (IMC) dozers and excavators may be a good starting point, according to Anetsberger. When Komatsu introduced its first IMC dozer more than a decade ago, it was the original Smart Construction solution. Several new models and next generation machines have been added that feature fully factory-integrated GPS machine control, which helps increase productivity and efficiency by reducing surveying and staking costs and eliminating the masts and cables of traditional aftermarket GPS add-on systems.

With seven sizes of IMC dozers, ranging from the 105-horsepower D39i-24 to the 354-horsepower D155AXi-8, there is a fit for

If you already have IMC equipment in your fleet, the next step may be to add solutions that help you better track and manage progress. Smart Construction Dashboard allows remote visualization of job site terrain progress with the aim to have a digital twin of the job site material movements.







**Intelligent Machine Control (IMC) dozers can help increase productivity. For those looking for an introduction to Smart Construction, IMC equipment may be the best fit.**

practically every construction site application. The IMC 2.0 dozers have advanced features such as proactive dozing that enables operators to cut/strip automatically from existing terrain as well as lift layer control, tilt steering control, and quick surface creation.

On the excavator side, there are IMC machines ranging from the 20-ton-class PC210LCi-11 to the 50-ton-class PC490LCi-11. All have semi-automatic functions that go beyond simple guidance to semi-automatically limit over-excavation and trace a target surface. Once target elevation is reached, even if the operator tries to move the joystick to lower the boom, the excavator doesn't allow it, reducing wasted time and the need for expensive fill material.

IMC 2.0 excavators feature bucket angle hold control, which automatically holds the bucket angle to the design surface during arm operation. It's less fatiguing for operators, so they can be more productive, and it produces a better finish-grade surface. Plus, auto tilt bucket control assists operators by aligning the bucket parallel with the slope, so that finish grading can be accomplished without needing to align the machine with the target surface. Testing has shown that these latest generation models help improve accuracy by up to 33% and efficiency

as much as 63% compared to conventional excavation and grading methods.

"We have more than a decade of proven success with IMC machines saving time and material costs, to help increase profitability," said Anetsberger. "IMC was our first Smart Construction solution, and we have built a suite of additional beneficial solutions, including our Smart Construction Retrofit for standard excavators. This technology is a good entry-level system for someone who may be considering GPS but is not ready to fully commit to integrated machine control."

Smart Construction Retrofit is an add-on, indicate-only system that offers many of the benefits of IMC. It's three-dimensional, so operators get the advantage of seeing where they are on a project, as well as their relation to target elevation. They can set audio alerts that change tone the closer they get to finish grade. That, along with the visual representation on the app, helps keep operators from digging too deep, saves time and lowers costs.

#### **From site to office and vice versa**

Additional Smart Construction solutions can help customers better manage their projects from pre-bid to final close out.

*Continued...*



# 'Easy to implement, user-friendly'

... continued

"Knowing which one to use is a matter of assessing your goals," Anetsberger stated. "Do you want faster, more accurate mapping and progress tracking? Do you want to move to 3D digital plans and combine drone data with 3D design data to confirm quantities? Do you want better labor management and cost tracking and to be able to do it remotely?"

A couple of solutions Anetsberger suggested for those who now have IMC machines are Smart Construction Remote and Smart Construction Dashboard. Remote allows users to remotely send design files to targeted machines in the field and remotely support operators without driving to the job site, saving time and fuel expenses. With remote access, contractors can help their operators troubleshoot issues in real time by viewing the same visuals as in the machine.

To help users with tracking cut/fill progress, Dashboard allows remote visualization of job site terrain progress, with the aim to have a digital twin of the job site material movements. It combines data from multiple sources into one comprehensive picture and provides a 3D graphic visualization of all design, drone and machine data to measure cuts/fills, quantities and productivity. Users can confirm pre-bid and topographical map data, track site progress in near real time, document job site conditions as evidence for change orders, and quickly and easily measure quantities.

"Dashboard and Remote are complementing solutions to IMC," said Anetsberger. "The visual representation and the ability to track job site progress more easily from practically anywhere, can lead to faster decisions and potentially better bottom-line outcomes. They are easy to implement, user-friendly,

and the cost savings have been significant for companies using them."

## Further building your solutions portfolio

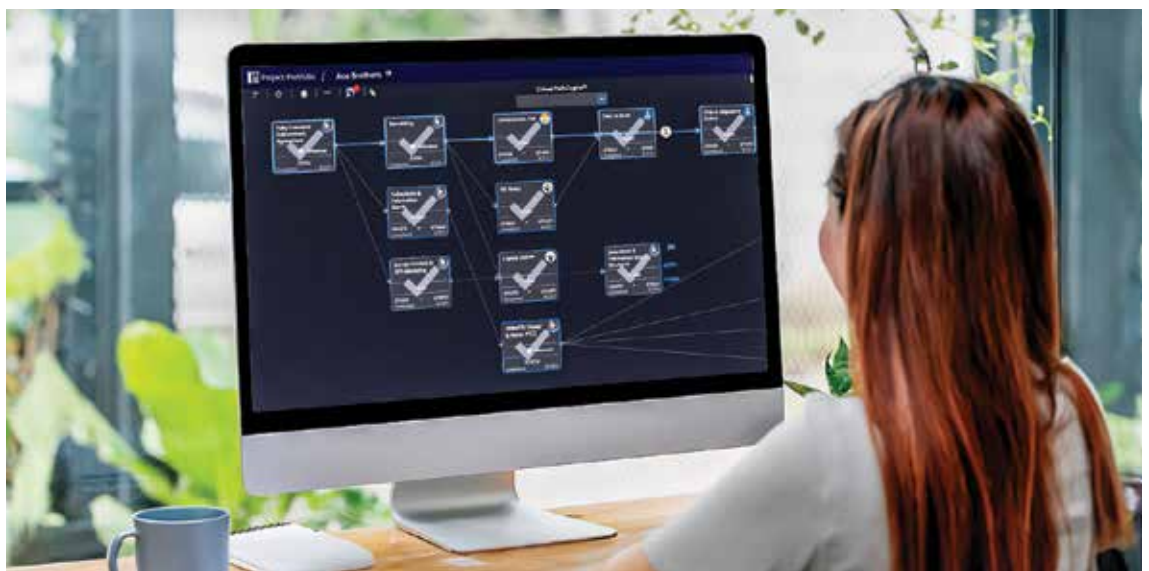
As any project manager knows, job sites often evolve and plans change, which makes staying on schedule and on budget a challenge. Smart Construction Office is a project scheduling and management solution that serves as a central hub for all your jobs and can help replace manual production and cost tracking with streamlined daily automation. It delivers timely updates, insights and auto-forecasting schedules, and cost estimates throughout a project's life cycle.

"Office is a project management tool that gives you reliable forecasting and insight into budget versus actual costs," explained Anetsberger. "Another consideration is Smart Construction Field, a mobile app that uses data to track spending and allows contractors to quickly view current conditions and progress. You can break it down by labor, equipment, materials, receipts, timecards, and much more. Both Office and Field are brand-agnostic, so they can be a great solution for contractors with mixed fleets."

Additional Smart Construction solutions include Design, Drone and Fleet, which can help replace paper plans with digital files, accurately map job sites, and collect data for fleet optimization.

"There are so many easy ways to implement technology solutions into your operations," concluded Anetsberger. "We encourage anyone who wants to streamline and optimize their operations to learn about Smart Construction solutions by talking to their distributor about how to get started." ■

**Cost tracking is essential. Smart Construction Office is a project scheduling and management solution that serves as a central hub for all your jobs. It can help replace manual production and cost tracking with streamlined daily automation that delivers timely updates, insights and auto-forecasting schedules, and cost estimates throughout a project's life cycle.**







United. Inspired.

## Powerful team

Working together to support your lineup.

Contact your Power location. We're proud to offer equipment from Epiroc.

**KNOXVILLE, TN** 3300 Dozer Lane  
(865) 577-5563 • (800) 873-0961

**CHATTANOOGA, TN** 4295 Bonny Oaks Dr.  
(423) 894-1870 • (800) 873-0963

**NASHVILLE, TN (La Vergne)** 320 Waldron Dr.  
(615) 213-0900 • (800) 873-0962

**MEMPHIS, TN** 3050 Ferrell Park Cove  
(901) 346-9800 • (800) 873-0965

**KINGSPORT, TN** 1487 Rock Spgs. Rd.  
(423) 349-6111 • (800) 873-0964

**TUPELO, MS** 1545 Hwy 45  
(662) 869-0283 • (800) 873-0967

**POWER**  
EQUIPMENT



# Get high performance in tight spaces with the new WIRTGEN W 150 Fi that features cutting-edge technology

**W**IRTGEN rounded out the top end of its compact milling machine class with the new high-performance W 150 Fi, which is an ideal choice for use on major construction sites with restricted space such as in inner city locations. Its size — in combination with an intuitive design, digital assistance systems, and the LEVEL PRO ACTIVE leveling system — allow for efficient one-person operation.

The agile front loader has a standard working width of 5 feet and features the latest and currently most eco-friendly engine technology to meet Tier 4 Final standards. The engine offers a maximum rated output of 426 horsepower and has been specially adapted to meet the needs of cold milling applications. Its high torque and simultaneously low noise emissions under all load conditions are impressive. Fuel consumption is low, even when delivering the highest milling performance and at the maximum working depth of 1 foot, 1 inch.

Operators can select one of three performance strategies: ECO, performance optimized, and milling pattern quality. This makes it possible to predefine the required milling pattern quality incrementally from coarse to very fine at the press of a button.

### Proven systems

Mill Assist, WIRTGEN PERFORMANCE TRACKER, and LEVEL PRO ACTIVE assist operating personnel and increase milling efficiency.

These systems are proven in other F-series cold milling machines, giving users the benefits of higher performance, and thanks to an automatically generated construction site report, clearly structured documentation of all site-relevant data.

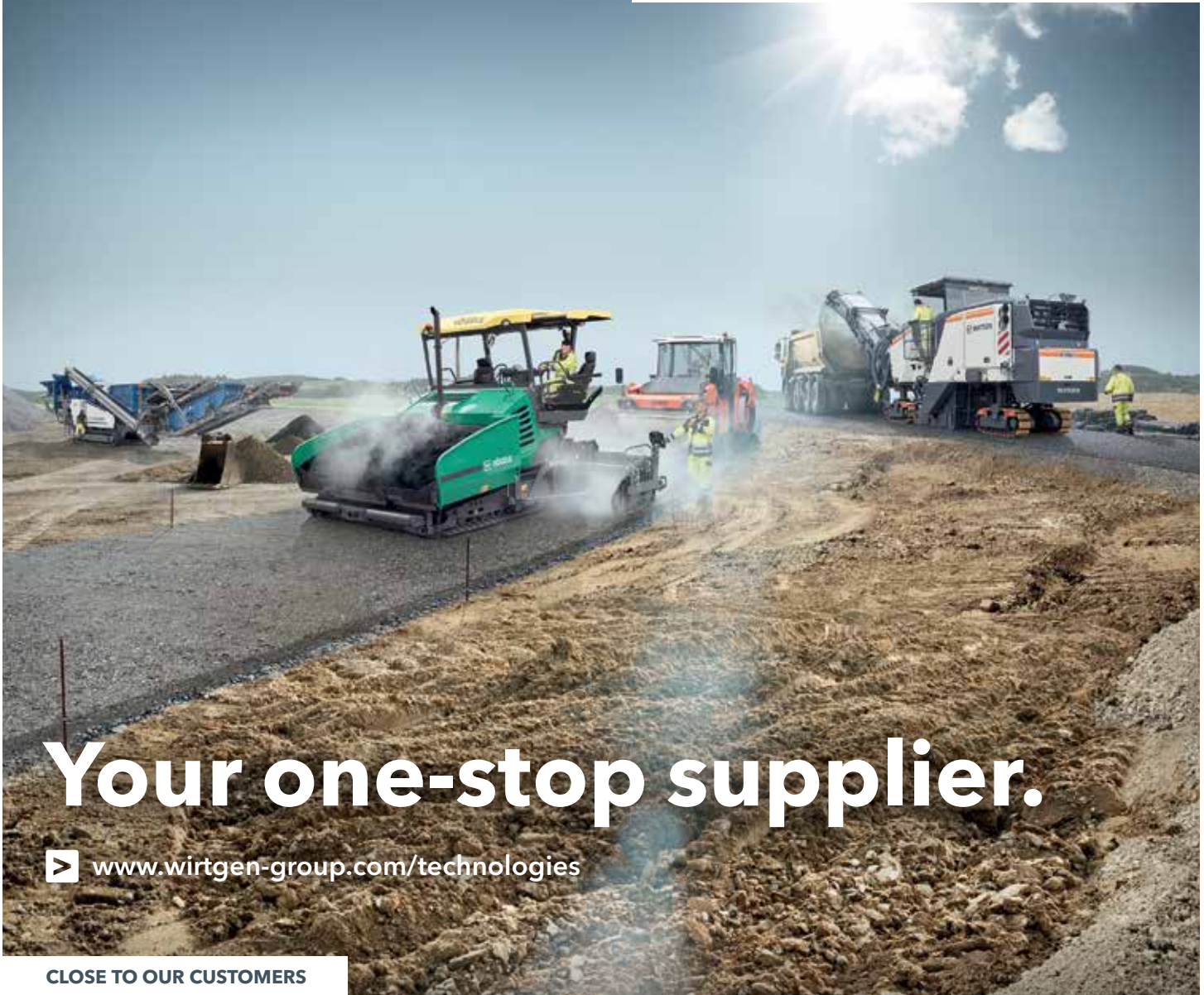
In automatic mode, Mill Assist selects the operating strategy with the most favorable balance between milling performance and operating costs, reducing fuel and water consumption, pick wear, and CO2 emissions. Mill Assist controls engine speed automatically according to the needs of the operator. The wide range of possible engine speeds means that the machine's uses are equally broad. The lower speed range enables a significant reduction of diesel fuel consumption and pick wear. In the upper speed range, an optimum milling pattern can be achieved at higher performance rates.

The LEVEL PRO ACTIVE leveling system is installed as a standard feature. It has an intuitive operating design and ensures precise milling results. The machine has an improved basic configuration for the integration of 3D and laser leveling systems and a revised Multiplex system with three-fold scanning. All sensors and measurement values are displayed in an easy-to-read format on the control panel in order to maximize process efficiency. Important machine functions are directly interconnected, allowing for a high degree of automation. ■

**The WIRTGEN W 150 Fi compact milling machine unites high productivity with the advantages of compact dimensions. It has a standard working width of 5 feet and a working depth of 1 foot, 1 inch.**







# Your one-stop supplier.

▶ [www.wirtgen-group.com/technologies](http://www.wirtgen-group.com/technologies)

CLOSE TO OUR CUSTOMERS

**ROAD AND MINERAL TECHNOLOGIES.** With leading technologies from the WIRTGEN GROUP, you can handle all jobs in the road construction cycle optimally and economically. Put your trust in the WIRTGEN GROUP team with the strong product brands WIRTGEN, VÖGELE, HAMM, KLEEMANN.

▶ [www.wirtgen-group.com](http://www.wirtgen-group.com)

WIRTGEN / VÖGELE / HAMM / KLEEMANN



[www.PowerEquipCo.com](http://www.PowerEquipCo.com)

**KNOXVILLE**  
3300 Dozer Lane  
Knoxville, Tennessee 37920  
(865) 577-5563  
1-(800) 873-0961

**MEMPHIS**  
3050 Ferrell Park Cove  
Memphis, Tennessee 38116-3502  
(901) 346-9800  
1-(800) 873-0965

**CHATTANOOGA**  
4295 Bonny Oaks Drive  
Chattanooga, Tennessee 37406  
(423) 894-1870  
1-(800) 873-0963

**KINGSPORT**  
1487 Rock Spgs. Road  
Kingsport, Tennessee 37664  
(423) 349-6111  
1-(800) 873-0964

**NASHVILLE**  
320 Waldron Drive  
La Vergne, Tennessee 37086  
(615) 213-0900  
1-(800) 873-0962

**TUPELO**  
1545 Highway 45  
Saltillo, Mississippi 38866  
(662) 869-0283  
1-(800) 873-0967



# ROBUST & PRODUCTIVE



[montabert.com](http://montabert.com)  
[montabertusa.com](http://montabertusa.com)



Montabert's unique variable energy breakers are truly multi purpose attachments for quarry management. Whether you need them for primary or secondary breaking, block splitting, crusher assistance or recycling, you will handle the job with maximum efficiency. Montabert's wide tool range will also increase the versatility of these breakers.

For more than 100 years, Montabert products have been produced with a commitment to designing methods and solutions focused on productivity, reliability and safety.

Knoxville, TN • (865) 577-5563  
Kingsport, TN • (423) 349-6111  
Memphis, TN • (901) 346-9800  
Little Rock, AR • (501) 823-4400

Nashville, TN • (615) 213-0900  
Chattanooga, TN • (423) 894-1870  
Tupelo, MS • (662) 869-0283  
Springdale, AR • (479) 927-1672

**POWER**  
EQUIPMENT

[powerequipco.com](http://powerequipco.com)



# New GD955-7 is designed to build and maintain haul roads for truck fleets of 100 tons and up

**S**olid and smooth haul roads are essential for maximum productivity. To build and maintain them for fleets of 100 tons and up, Komatsu's new GD955-7 motor grader offers operators the control and precision necessary.

The GD955-7 stands out with its ample horsepower and powerful blade downforce pressure for efficient grading performance. With faster working travel speeds compared to the previous model, Komatsu engineered the GD955-7 to increase grading efficiency while helping reduce maintenance requirements and total cost of ownership.

"With significant increases in operating weight, blade downforce pressure, and working travel speeds, this new size class motor grader will be a smart choice for increased efficiency on our customer's mine sites," said Joseph Sollitt, Director of Mining Support Equipment at Komatsu.

### Tight turning radius

Despite its large size, the GD955-7 offers excellent maneuverability. It can execute

tight U-turns on a standard 100-ton class haul road without the need to fully cut the wheel or course correct. The long wheelbase and large, 27-degree articulation angle allow a tight turning radius and provide maneuverability for narrow haul road applications in confined spaces and around obstacles.

The newly adopted, long-life circle bearing allows for smooth and precise rotation of the moldboard while eliminating the need for circle play adjustments or replacing wear plates. Coupled with a standard auto-lubrication system, the GD955-7 is engineered to help reduce planned and unplanned maintenance downtime while helping to extend life to overhaul.

"The GD955-7 comes standard with an 18-foot moldboard, and there is a 20-foot optional moldboard available," said Sollitt. "We encourage anyone who has a larger fleet of trucks and wants to build and maintain their haul roads to contact their Komatsu distributor for additional information." ■

**Komatsu's new GD955-7 motor grader offers operators the control and precision needed to build and maintain haul roads for truck fleets of 100 tons and up.**



**Joseph Sollitt,**  
Director of Mining  
Support Equipment,  
Komatsu

### Quick Specs

**Model**  
GD955-7

**Operating Weight**  
104,323 lbs.

**Horsepower**  
426 hp

**Moldboard**  
18 ft. standard  
20 ft. optional







# LeeBoy

## TRUST LEEBOY.

You work hard—and for all the right reasons: pride, quality, reputation, prosperity. You expect your equipment to work as hard as you do, to be every bit as tough, productive and reliable as you are. We are LeeBoy. The name behind the world's most dependable and productive commercial asphalt paving equipment.

**POWER**  
EQUIPMENT

[www.PowerEquipCo.com](http://www.PowerEquipCo.com)



# LeeBoy's new 210-horsepower 8680 asphalt paver is its largest tracked paver to date

Industry need and customer demand led LeeBoy to create its largest tracked paver to date, the 8680, which is designed to be a commercial paver with highway-class features. At 28,000 pounds, the 8680 runs on a 210-horsepower Tier 4 engine.

"There was a distinct gap in the market for an asphalt paver this size," said Chris Broome, Senior Product Manager at LeeBoy. "This machine features higher production, higher horsepower, and will be capable of doing more road paving projects and those larger production jobs we're seeing more of in the heavy-commercial-class market."

As machine size increases, so do the benefits to the contractor as additional highway-class features make their way onto commercial pavers. The LeeBoy 8680 has high-speed smooth rubber tracks with oscillating bogies, a four-speed drive system, power tunnel shields, and height-adjustable augers.

"These highway-class features are going to give this commercial-class machine great results," said Broome. "Increased performance, efficiencies and consistency

will all be seen with these features on the 8680 asphalt paver."

The paver also features the proven performance of the HD Pro Screed used on the 8530 and 8616D asphalt pavers — but upgraded for the 8680.

Plus, the paver has the ability to travel up to 616 feet per minute, or 7 miles per hour, with a paving speed of up to 300 feet per minute, or 3.4 miles per hour. ■



**The new LeeBoy 8680 asphalt paver is a heavy-commercial-class paver with upgraded highway-class features and benefits. The LeeBoy 8680 has high-speed smooth rubber tracks with oscillating bogies, a four-speed drive system, power tunnel shields, and height-adjustable augers.**







## Have you seen what's **new** in My Komatsu?

We've made some exciting changes! An **all-new mobile app**, simplified ordering through the **Online Parts Store**, **Komatsu Care Program (KCP)** integration and more have been added to enhance the My Komatsu user experience.

Log in to your My Komatsu account to see the full range of new features. Don't have a My Komatsu account? Go to [mykomatsu.komatsu](https://mykomatsu.komatsu) to sign up.

**KOMATSU**  
My Komatsu



# My Komatsu updates, new features improve fleet management to help you get the critical information you want in fewer clicks

Fleet management is essential to maintaining your equipment's health. Properly maintained equipment helps increase uptime and lower overall owning and operating costs. Staying on top of fleet management can be challenging, especially if you are still relying on end-of-day field reports or drives to the job site to check hour meters.

Digital solutions such as My Komatsu can change the game by giving you real-time machine data that can be accessed from practically anywhere, as well as tools that give you the capability to order parts and more. Recent updates make it easier to navigate, so you can quickly get the information you need to help make proactive fleet management decisions.

"Filtering capabilities have been updated to help users more quickly access the information they are looking for," said Andrew Casey, Digital Solutions Analyst, Komatsu. "It's more like a dashboard where you can get information in fewer clicks, which is something our customers wanted. Using their feedback, we made changes to make the interface more user-friendly. Customers who already have a My Komatsu account will see the updates automatically."

Casey said one of the priorities based on customer feedback was a redesign of the My Fleet page, emphasizing that its substantially different look and easier navigation enable users to see their entire fleet of registered machines all on a single page without having to go through multiple tabs.



**Andrew Casey,**  
Digital Solutions  
Analyst,  
Komatsu

*Continued...*

**My Komatsu lets users monitor their fleet from anywhere at any time and helps optimize fleet management — with real-time data that can help you make proactive decisions.**





# Easier, faster and more efficient

... continued

"We also expanded the ability to filter by idle time percentage, SMR range, model type, manufacturer, and much more," Casey added. "A new sync map feature lets users zoom in on a particular territory, click the sync map to list button, and see machines just in that territory."

## Component tracking capability

Another major change is the addition of component tracking, according to Casey. The new functionality allows users to monitor component health, so they can more proactively plan for replacements.

"Users can set an interval based on last service date or SMR hours of the machine, then create an alert that notifies them when a component is due for replacement," Casey explained.

Machine health and fleet monitoring are now easier, faster and more efficient with new alerting features, including additional alert types for abnormality codes, coverage, Komatsu Oil and Wear Analysis (KOWA) samples, and more. Consolidated and customizable views of your alerts can be set with the alerting dashboard. With My Komatsu, you can choose how to receive notifications — by web, mobile app, email or SMS.

Telematics information (Komtrax) in My Komatsu remains a vital feature that works with Komatsu and other brands that you have

registered in your My Komatsu account. You can view machine location, fuel consumption, and machine health, which includes maintenance history.

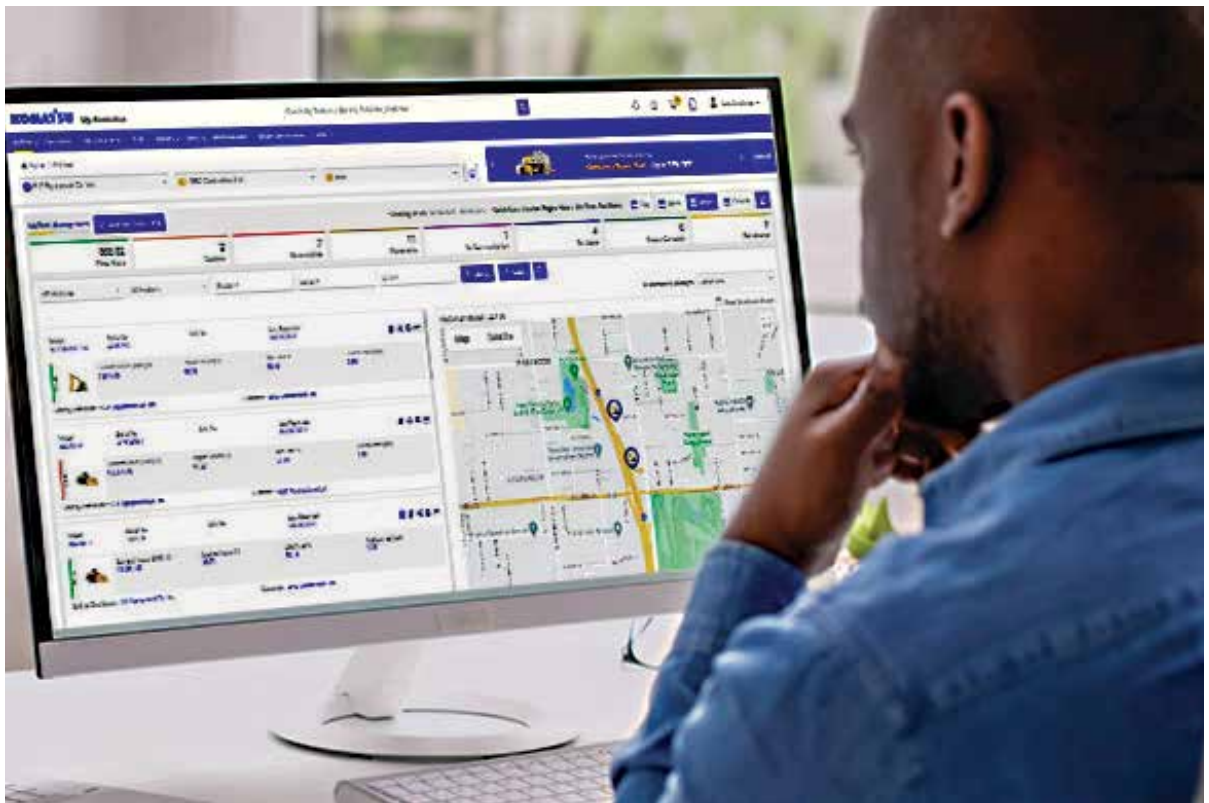
Additional features available in My Komatsu include:

- **Publications** – View parts and support manuals for your machines
- **E-commerce parts stores** – Easily order parts and solutions that you can pick up in store, have shipped to your shop, or get delivered directly to your job site
- **Digital solutions** – Sign up for and access your Smart Construction accounts such as Dashboard, Design, Drone, Field, Fleet, Office and Remote

If you don't already have a My Komatsu account, you can sign up for one by visiting <https://mykomatsu.komatsu>. Once you have an account, your dealer can help you get set up and work with you on how to best utilize the platform.

"Proactive fleet management results in less downtime because you have a clear picture of your equipment's health at all times," said Casey. "You can better plan for routine service and component changes, address excess idle time, train your staff, monitor job sites and machine performance, schedule part orders, and much more." ■

My Komatsu updates include easier navigation, so you can access information more quickly.





# The original construction broom company



## Broce Broom

With a wide range of options, Broce Brooms are versatile enough to handle nearly any sweeping challenge. From optional curb sweepers and water spray systems to scraper blades and a choice of engines, you can customize your Broce Broom to meet individual job site needs.

All self-propelled Broce Brooms have a standard hydrostatic drive and a compact wheel base for better maneuverability in tight places. Our sound-suppressed cab provides maximum operator comfort and visibility for optimal productivity and safety.

To find out how Broce Brooms can help you make a clean sweep every time, contact your local Power Equipment branch for a demonstration.

**POWER**  
EQUIPMENT **THE POWER TO PERFORM**

### KNOXVILLE

3300 Alcoa Highway  
Knoxville, Tennessee 37920  
(865) 577-5563  
1-(800) 873-0961

### CHATTANOOGA

4295 Bonny Oaks Drive  
Chattanooga, Tennessee 37406  
(423) 894-1870  
1-(800) 873-0963

### NASHVILLE

320 Waldron Drive  
La Vergne, Tennessee 37086  
(615) 213-0900  
1-(800) 873-0962

### MEMPHIS

3050 Ferrell Park Cove  
Memphis, Tennessee 38116-3502  
(901) 346-9800  
1-(800) 873-0965

### KINGSPORT

1487 Rock Spgs. Road  
Kingsport, Tennessee 37664  
(423) 349-6111  
1-(800) 873-0964

### TUPELO

1545 Highway 45  
Saltillo, Mississippi 38866  
(662) 869-0283  
1-(800) 873-0967

[www.PowerEquipCo.com](http://www.PowerEquipCo.com)



# Komatsu PC130LC-11, PC490LCi-11 and PC900LC-11 excavators named among best new products

Three Komatsu excavators are featured on *Construction Equipment* magazine's annual list of top new products, including the PC130LC-11, the PC490LCi-11 and the PC900LC-11.

According to *Construction Equipment*, its Top 100 New Products list is the longest-running awards program of its kind in the industry. Each year, editors evaluate products introduced during the previous months and choose those considered most innovative based on four criteria:

- Is it an advancement in technology?
- Is it a new product line?
- Does it offer significant improvements to an existing product?
- Does it increase competition in its category?

### Increased lift capacity

Komatsu's upgraded PC130LC-11 features a longer undercarriage with 8% more track length, which provides greater stability and increased operating weight. That contributes to increased lift capacity over the front and side — up to 20% compared to the previous model.

With an operating weight of 28,440 to 29,101 pounds, the PC130LC-11 is highly transportable and can be moved with a tag trailer and still have capacity to spare for additional support equipment.

### Innovative bucket angle hold control

With Intelligent Machine Control (IMC) 2.0, the PC490LCi-11 offers sophisticated productivity-enhancing automation, making it an excellent match for excavation, trenching, slope work or fine grading. The excavator helps minimize over-excavation, empowering operators of all skill levels to dig straight to grade quickly and accurately.

The PC490LCi-11 features bucket angle hold control that automatically holds the bucket angle to the design surface during arm operation, enabling operators to perform

**The Komatsu PC490LCi-11 Intelligent Machine Control (IMC) 2.0 excavator is excellent for excavation, trenching, slope work or fine grading. It helps minimize over-excavation, empowering operators of all skill levels to dig straight to grade quickly and accurately.**





### Quick Specs

Model	Horsepower	Operating Weight	Bucket Capacity
PC130LC-11	97.2 hp	28,440-29,101 lbs.	0.34-0.78 cu. yd.
PC490LCi-11	359 hp	105,670-107,850 lbs.	1.47-4.15 cu. yd.
PC900LC-11	543 hp	204,148 lbs.	3.7-8.0 cu. yd.

The Komatsu PC900LC-11 excavator can deliver up to a 40% increase in productivity, 25% more arm crowd force, and 12% more swing torque compared to the PC800LC-8.

finish grading using only arm input. It also has a new 10.4-inch IMC monitor with increased memory capacity, processing speed, and pinch-to-zoom functionality.

### Up to 40% greater productivity

The PC900LC-11 is ideal for those working in applications that involve moving large amounts of material efficiently. Productivity was a major driver of its design. It's a mass excavator with the ability to handle a wide variety of jobs and materials, and can perform compound operations.

Designed for heavy construction, demolition, material handling, deep sewer, water, large mass excavation and quarries/mining, the PC900LC-11 provides increased bucket and lifting capacity for higher performance compared to its predecessor, the PC800LC-8. Major structures, booms and arms as well as a redesigned revolving frame were engineered to increase longevity.

The PC900LC-11 can deliver up to a 40% increase in productivity, 25% more arm



With more track on the ground than its predecessor, the PC130LC-11 has greater lift capacity.

crowd force, and 12% more swing torque compared to its predecessor. It also features the KomVision camera monitoring system as standard. ■



# Bramco-MPS merger announced



**Mark Strader,**  
Vice President and  
General Manager  
of Crushing  
and Screening

**B**ramco-MPS has announced that it will integrate into Brandeis Machinery & Supply Company and Power Equipment Company as its Crushing and Screening Division, working across both brands in Indiana, Kentucky, Tennessee, Mississippi and Arkansas.

Brandeis Machinery and Power Equipment are part of Bramco Inc. Together, they form one of the most expansive networks of distributing heavy equipment across industries such as construction, mining, road paving, aggregate and material processing.

Mark Strader, Vice President and General Manager of Crushing and Screening, expressed his enthusiasm for the merger and stressed the company's commitment to customer satisfaction.

He stated, "This strengthens our dedication to delivering solutions through ruggedly built, state-of-the-art machines, combined with our excellent service, ensuring our customers experience an even smoother, more efficient and valuable interaction."

Customers can expect:

- **Consolidated Services:** The merging of Bramco-MPS brings products and services together under one roof, providing a complete approach to customer needs.
- **Enhanced Expertise:** Customers can still count on expert assistance in the construction and aggregate industry.

The integration boosts capabilities and resources, ensuring additional support through sales, service and parts channels.

- **Streamlined Processes:** The core of this transition is simplifying customer interactions. The streamlined processes aim to reduce complexities, giving customers direct access to tailored solutions without unnecessary steps.

This integration is a continued commitment to increasing the value delivered to customers. The customer relationship remains paramount, and the goal is to continue being a trusted partner, providing best-in-class solutions for their businesses.

Bramco boasts a robust distribution network comprised of 17 locations under its leading brands. Power Equipment operates branches in Tennessee, Mississippi and Arkansas, while Brandeis Machinery extends its presence into Indiana, Kentucky and West Virginia. Brandeis Machinery and Power Equipment form integral parts of Bramco, providing Rebuild services, used equipment, and Certified Rental for comprehensive heavy machinery rental solutions.

For more information, reach out to your local branch or visit:

- [www.BrandeisMachinery.com](http://www.BrandeisMachinery.com)
- [www.PowerEquipCo.com](http://www.PowerEquipCo.com)
- [www.CertifiedRental.com](http://www.CertifiedRental.com) ■

**Bramco-MPS will integrate into Brandeis Machinery & Supply Company and Power Equipment Company as its Crushing and Screening Division.**







2022 KOMATSU PC360LC-11, A38644, PT34553-1, 2,018 hrs.



2023 HAMM HC 70i, H287.0101, J00794, 50 hrs.

Year/Make/Model	S/N	Equip #	Location	Hours
<b>Compaction</b>				
2018 HAMM H 12i	H235.0502	BJ00730	Lexington, KY	1,600
2023 HAMM HC 70i	H287.0235	J00790	Louisville, KY	50
2023 HAMM HC 70i	H287.0276	J00791	Louisville, KY	50
2023 HAMM HC 70i	H287.0101	J00794	Louisville, KY	50
<b>Dozers</b>				
2019 KOMATSU D39PXi-24	96445	PT31934-1	Tupelo, MS	3,632
2018 KOMATSU D39PX-24	95203	BPE22D15	Indianapolis, IN	4,559
2022 KOMATSU D51PX-24	15393	PP33963-1	Tupelo, MS	2,546
2019 KOMATSU D51PX-24	B20398	J00797	Louisville, KY	2,634
2019 KOMATSU D51EX-24	B20316	J00808	Knoxville, TN	3,942
2020 KOMATSU D65EXi-18	92296	J00767	Knoxville, TN	1,560
<b>Excavators</b>				
2023 KOMATSU PC88MR-11	C40172	J00805	Little Rock, AR	375
2022 KOMATSU PC138USLC-11	60117	J00796	Stanville, KY	892
2021 KOMATSU PC130-11	91841	J00811	Knoxville, TN	873
2021 KOMATSU PC170LC-11	35960	PT37492	Little Rock, AR	2,450
2022 KOMATSU PC170LC-11	36391	J00810	Chattanooga, TN	381
2019 KOMATSU PC170LC-11	35528	J00813	Louisville, KY	1,415
2022 KOMATSU PC210LC-11	A13450	PT33446-1	Little Rock, AR	2,745
2021 KOMATSU PC210LC-11	A13122	PT32978-1	Memphis, TN	1,869
2019 KOMATSU PC210LC-11	C80654	J00754	Knoxville, TN	2,850
2019 KOMATSU PC240LC-11	K73130	J00798	Louisville, KY	3,626
2019 KOMATSU PC240LC-11	K73143	J00799	Memphis, TN	3,715
2019 KOMATSU PC240LC-11	A22458	J00801	Stanville, KY	1,841
2021 KOMATSU PC290LC-11	K73262	PT36490	Memphis, TN	3,099
2022 KOMATSU PC360LC-11	A38644	PT34553-1	Little Rock, AR	2,018
<b>Forestry</b>				
2020 FECON FTX150	OFTX1501933017	PT32182-1	Nashville, TN	2,009
<b>Graders</b>				
2016 KOMATSU GD655-6	60061	BJ00726	Indianapolis, IN	556
<b>Wheel Loaders</b>				
2018 KOMATSU WA270-8	A28440	J00743	Knoxville, TN	2,661





C.P.I.  
P.O. Box 1689  
C.R., IA 52406-1689

Presorted  
Standard  
US Postage Paid  
C.P.I.

24101

# KOMATSU

# TAKEUCHI



Call the Certified Rental hotline to learn more about rental options.

**POWER**  
EQUIPMENT

**(800) 997-7530**

***CERTIFIED RENTAL***<sup>®</sup>

Contact your local Power Certified Rental branch for more information.

**Knoxville, TN**  
**(865) 577-5563**

**Kingsport, TN**  
**(423) 349-6111**

**Memphis, TN**  
**(901) 346-9800**

**Nashville, TN**  
**(615) 213-0900**

**Chattanooga, TN**  
**(423) 894-1870**

**Tupelo, MS**  
**(662) 869-0283**

**Little Rock, AR**  
**(501) 823-4400**

**Springdale, AR**  
**(479) 927-1672**

**PowerEquipCo.com**

**CertifiedRental.com**